

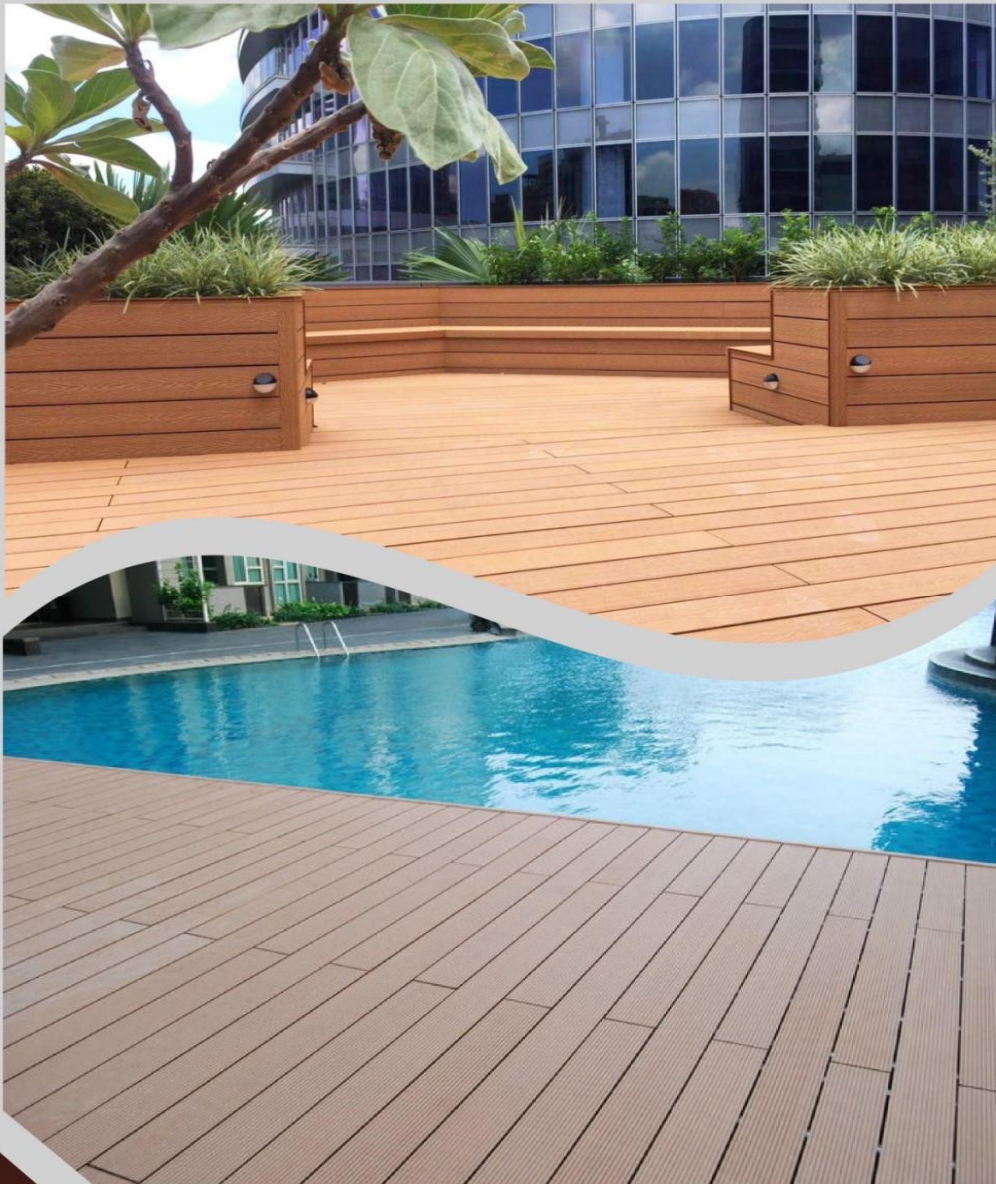




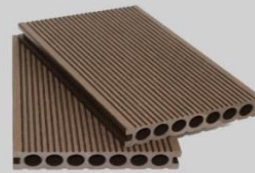
DUREFLEX

WPC DECKING

CATALOG



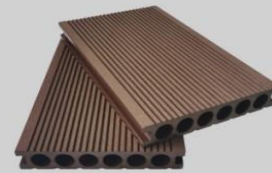
WPC Decking



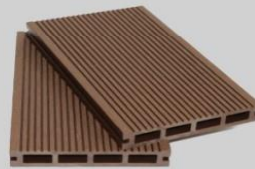
GF150C25B



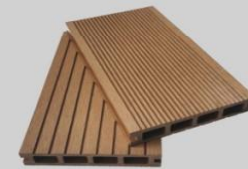
GF140C25B



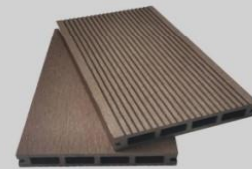
GF145C30B



GF146K25B



GF135F25B



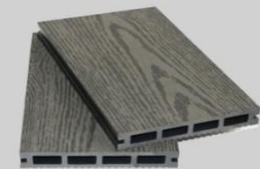
GF140F22A



GF140F22A-B



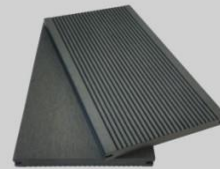
GF140F22A-B



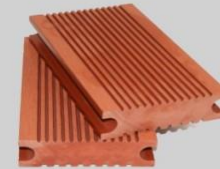
GF140F22A-B



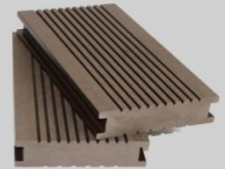
WPC Decking



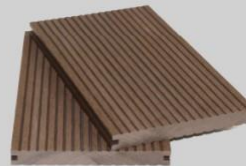
GF140S20C



GF140S40C



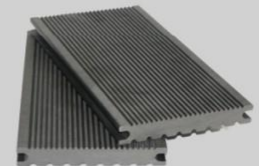
GF140S40B



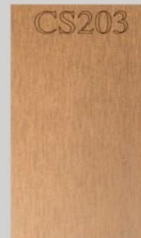
GF140S20B



GF145S25B



GF140S25B



CS203



CS201



CS202



CS205



CS204



CS206



3D Embossing Decking



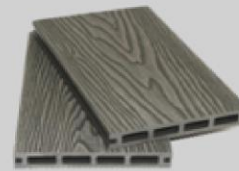
GF140K22-3D



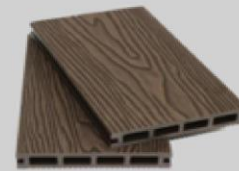
GF140K22-3D



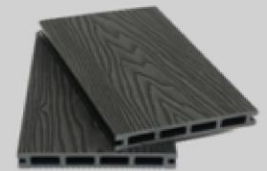
GF140K22-3D



GF140F22A-3D



GF140F22A-3D



GF140F22A-3D



CS203



CS201



CS202



CS205



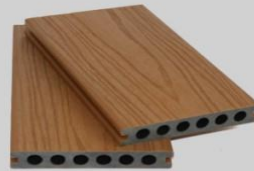
CS204



CS206



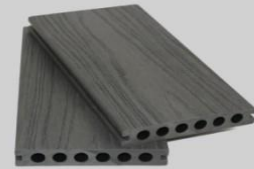
Co-extrusion Decking



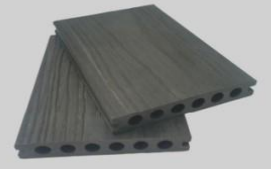
GF142Y22J



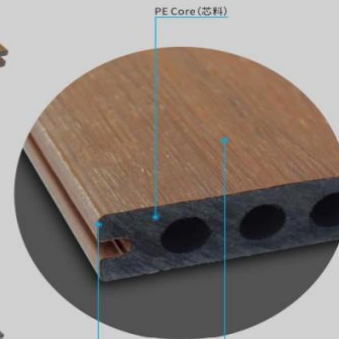
GF142Y22J



GF142Y22J



GF142Y22J



保护层采用先进的高分子工程材料，工艺配方独特，经久耐用。
SHELL
The shell is made of polymer materials. Compared to other composites on the market Xianfeng Co-extrusion decking caps the boards all the way around. Around the board ensures maximum protection against the elements.

Long Lifespan 寿命长
Stain Resistance 防污
Ultra Low Maintenance 超低维护



GJ-ZTM



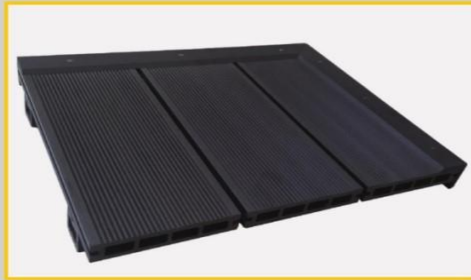
GJ-YSY



GJ-HHL



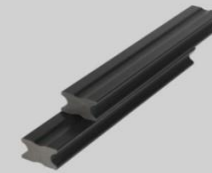
GJ-HTM



Accessories



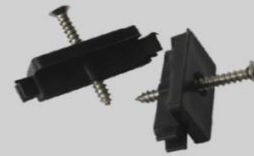
GF50K30
Hollow Joist



GF40S25
Solid Joist



GF50B40
Edging Seal



GF-S01
Plastic Clip



GF-S02
U-type stainless Clip



GF-S03
S-type stainlessClip



GF-S04
Stainless Clip



GF-S05
Starter Clip



GF-S06
Expansion Screw



Item	Requirement	Test Results	Item	Requirement	Test Results
Water Content(%)	≤ 2	0.4	Hammer Falling Impact In Low Temperature, Broken pcs	≤ 1	1
Rockweel Hardness(HRR)	≥ 58	68	State After Heating(%)	± 2.5	-0.5
Water Absorption Thickness Swell(%)	≤ 1	0.2	Length Change Rate Of Repeating High And Low Temperature(%)	± 0.2	-0.2
Static Bending Strength(mpa)	≥ 20	24	Screw Holding Capability(N)	≥ 800	1251
Bending Elastic Modulus(mpa)	≥ 1800	2565	State After Heating	No Babbles,crachs And Pockmarks	
Abrasion Resistance(g/100r)	≤ 0.08	0.08			

Thanks

DURDOOR

Contact:

Phone: +966 556 006 672

Email: info@DURDOOR.COM

Website: www.durdoor.com