





DURACCCESS



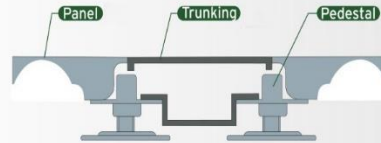
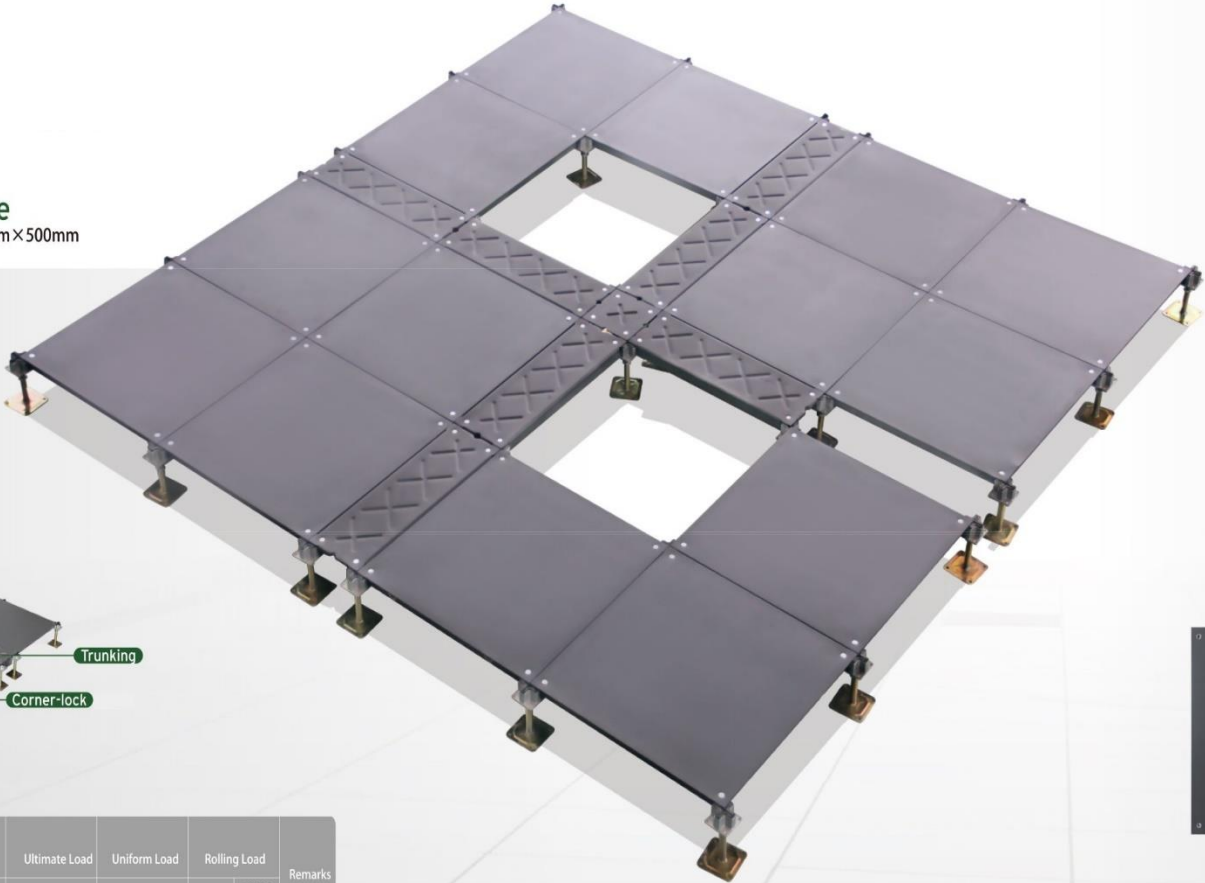
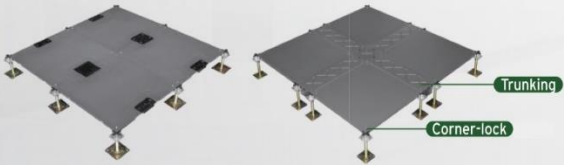
OA500 All-steel Bare Raised Floor

OA500 Panel

Size
500mm×500mm

Structure

OA500 panel is made of steel plate, top to be SPCC material, bottom to be ST14 material, after pan formed and joined together by resistance welding, the panel is coated with epoxy paint, then infilled with light cement.



Feature

- All-steel structure, nice loading capacity
- Excellent fire resistance ability
- Good dimension accuracy, panel can be interchangeable

Technical parameter

Type	Size	Concentrated	Impact Load	Ultimate Load	Uniform Load	Rolling Load		Remarks	
						10times	10000 times		
FS668	OA500-CQ	500×500×28	>2990	670	>8890	>12500	2215	1548	(CISCA)
FS800	OA500-Q	500×500×28	>3596	670	>10799	>19796	2959	2215	
FS1000	OA500-B	500×500×28	>4498	670	>13494	>23294	3596	2959	
FS1250	OA500-Z	500×500×28	>5560	670	>16680	>33000	4668	3568	

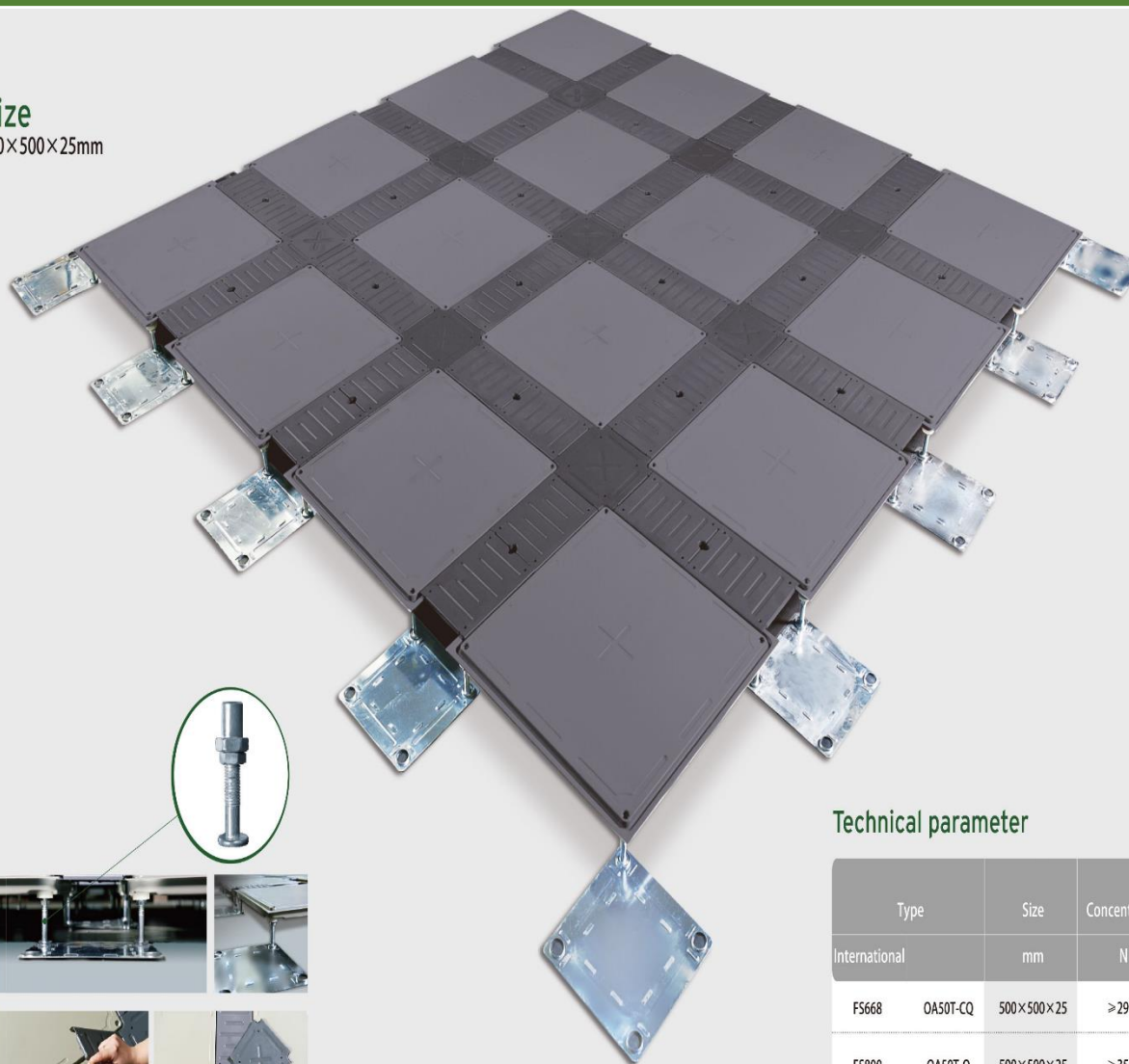




OA 50T Steel Trunking Raised Floor

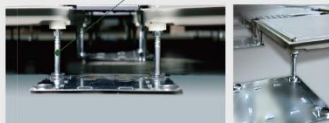
OA50T Panel

Size
500×500×25mm



Structure

OA500 All-steel Trunking Raised Floor is the second innovated net-floor, an environment-friendly and energy-saving product with green environment authentication. It keeps the advantage of the original net-floors, and adopting TROX pressing rivet structure; it's through-hole free and convenient for arranging the wires.



Feature

- Especially designed for low finished flooring height
- Good conductivity and air leakage, flexible trunks for wires and cables
- Excellent Inter-convertibility; Easy Installation; Easy Maintenance



Center Cap



Flank Cap



Trunking



Outlet box



Base Connector



Screw Pedestal

Technical parameter

Type	Size	Concentrated	Impact Load	Ultimate Load	Uniform Load	Rolling Load	Remarks
International	mm	N	N	N	N/M ²	10times 10000 times	
FS668	OA50T-CQ	500×500×25	≥2990	670	≥8890	≥12500	2215 1548
FS800	OA50T-Q	500×500×25	≥3596	670	≥10799	≥19796	2959 2215
FS1000	OA50T-B	500×500×25	≥4498	670	≥13494	≥23294	3596 2959
FS1250	OA50T-Z	500×500×25	≥5560	670	≥16680	≥33000	4668 3568

Trunking

Trunking for wires is one of the advantages of ZT trunking floor. Cover flank covers on basic panel edges after lying wires in trunks. Each panel stands separately, making it very convenient to lie flank cover before or after wires.



OA600 Steel Raised Access Floor

OA600 Panel

Size
600×600×35mm

Applicable place

Grade A Office Buildings; Intellectualized Working Environment; Stock Exchange Building; Mobile Devices Office Blocks like Telecom.
Usually use in matching with tile carpets.

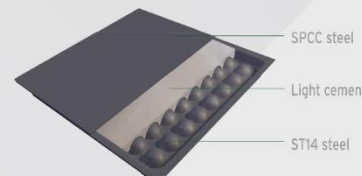
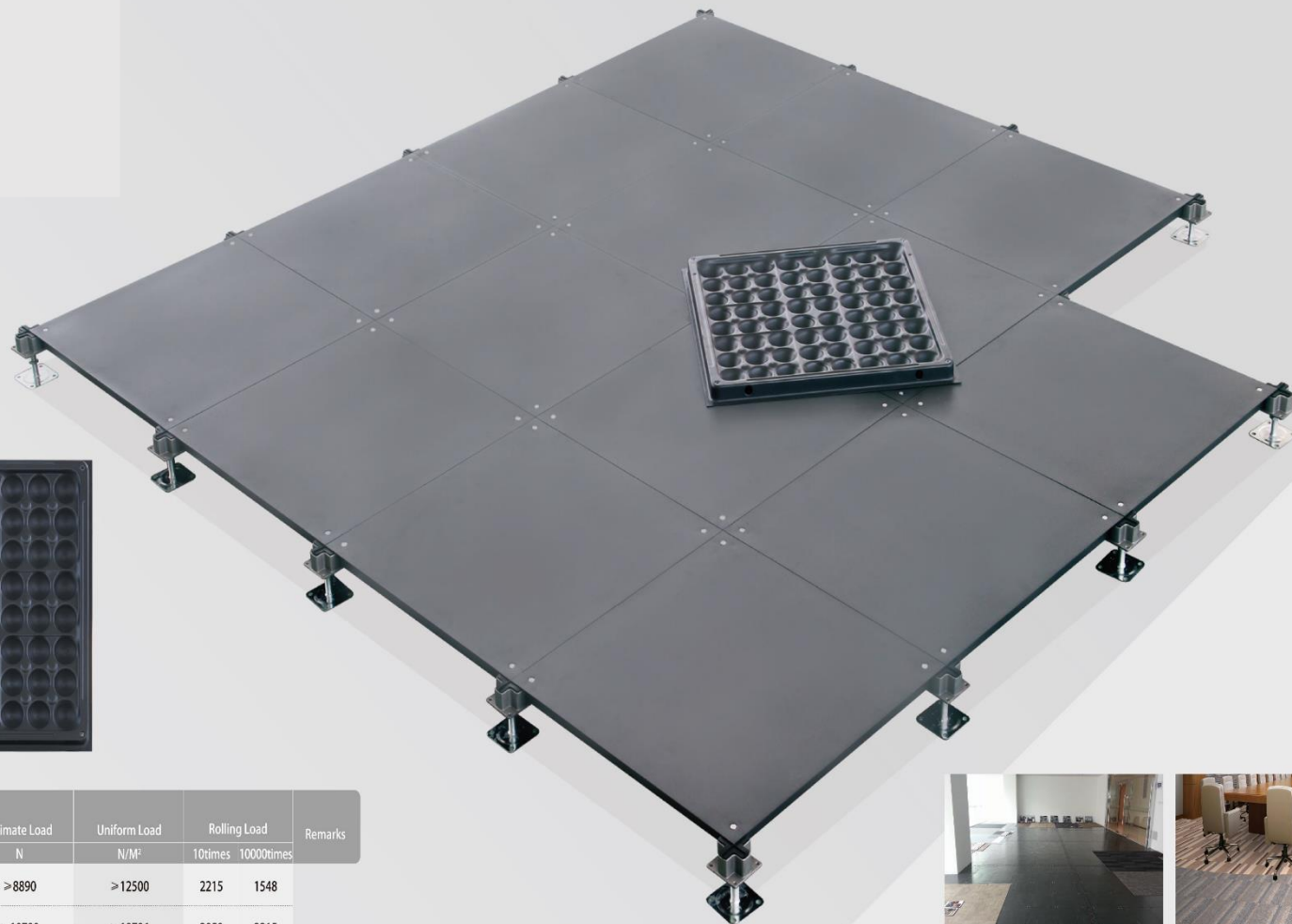
Feature

Embossment structural.
Enhance the concentrated load capability.

Technical parameter

Type	Size	Concentrated	Impact Load	Ultimate Load	Uniform Load	Rolling Load	Remarks
International	mm	N	N	N	N/M ²	10times 10000times	
FS 668	OA600-CQ	600×600×33	≥2990	670	≥8890	≥12500	2215 1548
FS 800	OA600-Q	600×600×33	≥3596	670	>10799	>19796	2959 2215
FS 1000	OA600-B	600×600×33	≥4498	670	>13494	≥23294	3596 2959
FS 1250	OA600-Z	600×600×33	≥5595	670	>16797	≥33084	4498 3596
FS 1500	OA610-CZ	600×600×33	≥6693	670	>20090	≥42581	5595 4498
FS 2000	OA610-T	600×600×33	≥8898	670	>26685	>49784	6693 5595
FS 2500	OA610-CT	600×600×33	≥11093	670	>33290	≥58280	8898 6693

(CISCA)



Structure

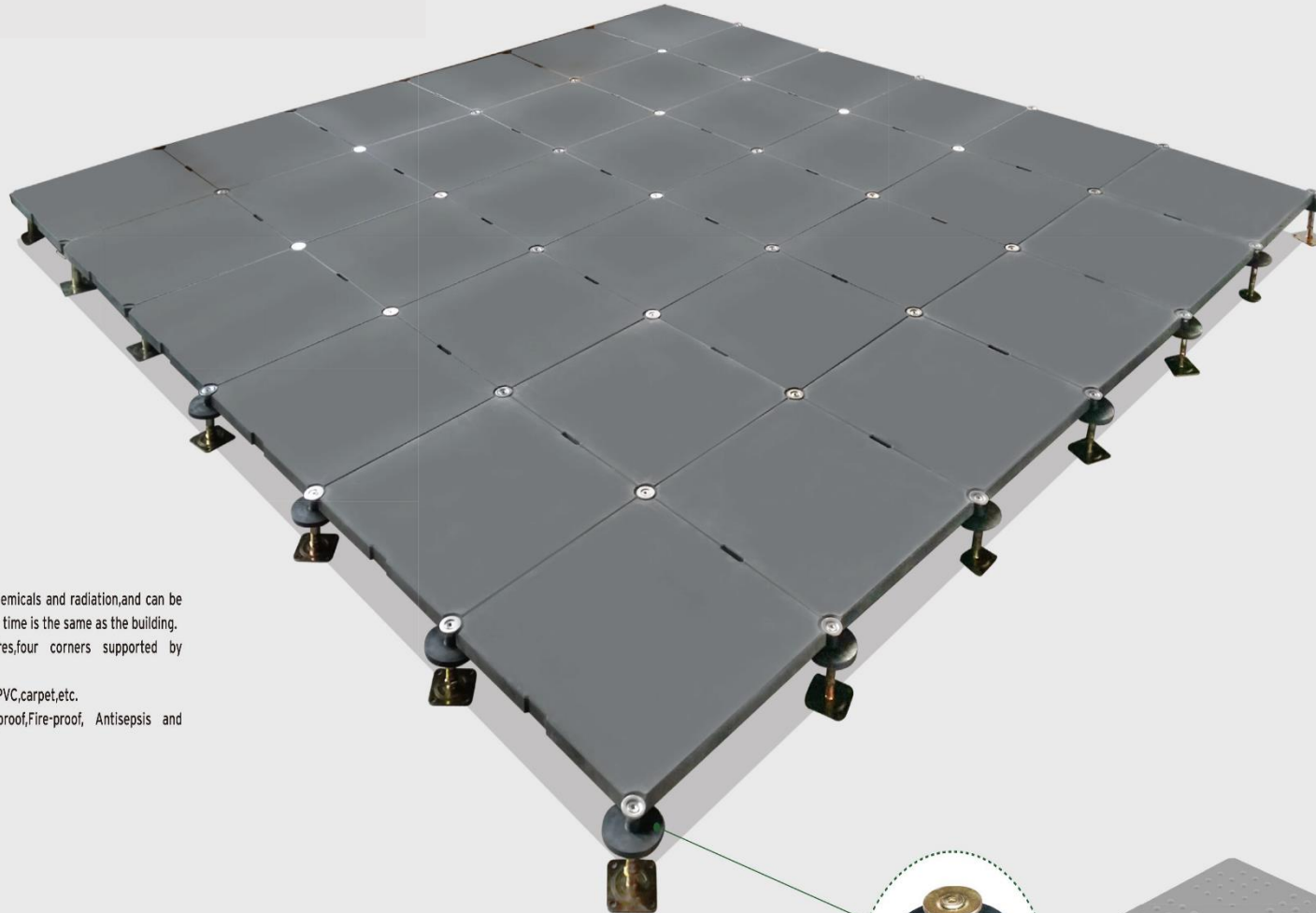
- Screw down design supports the system effectively and makes the installation easily and stable.
- The load is transferred directly onto the center of pedestal column.
- Different types of understructures are available for install OA panel system.



GRC Floor

Size

500mm×500 x 26mm



Feature

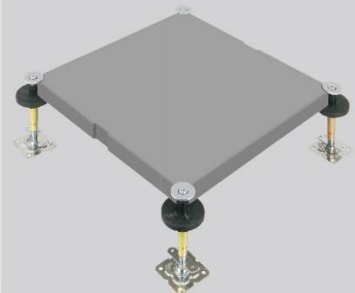
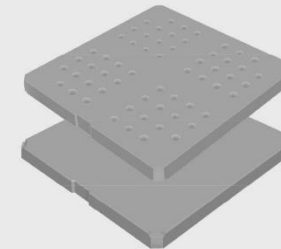
- The panel has no volatile toxic chemicals and radiation, and can be decomposed completely. Its service time is the same as the building.
- Each panel has hole for wires, four corners supported by pedestals, with no stringer.
- Finishes can be laminate flooring, PVC, carpet, etc.
- Good loading capacity. Water-proof, Fire-proof, Antisepsis and Sound insulation.

Technical parameter

Type		Size	Concentrated	Impact Load	Ultimate Load	Uniform Load	Rolling Load	
International		mm	N	N	N	N/M ²	10times	10000times
FS800	WJ500-Q	500×500×26	3000	3000	≥9000	≥12500	2215	1548
FS1000	WJ500-B	500×500×26	5000	5000	≥15000	≥28598	4121	3210

Structure

Inorganic cement floor is made of No.42.5 cement, 40pcs barbed wire (φ 2.5mm), Inorganic fiber, silicate, mineral fiber, quartz sand etc, once molded after high pressure.





Encapsulated Calcium Sulfate Floor

Size

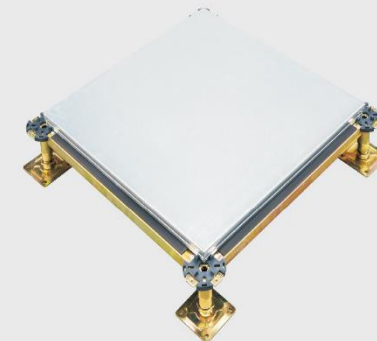
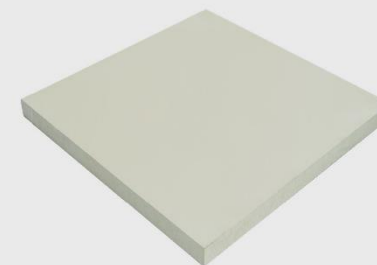
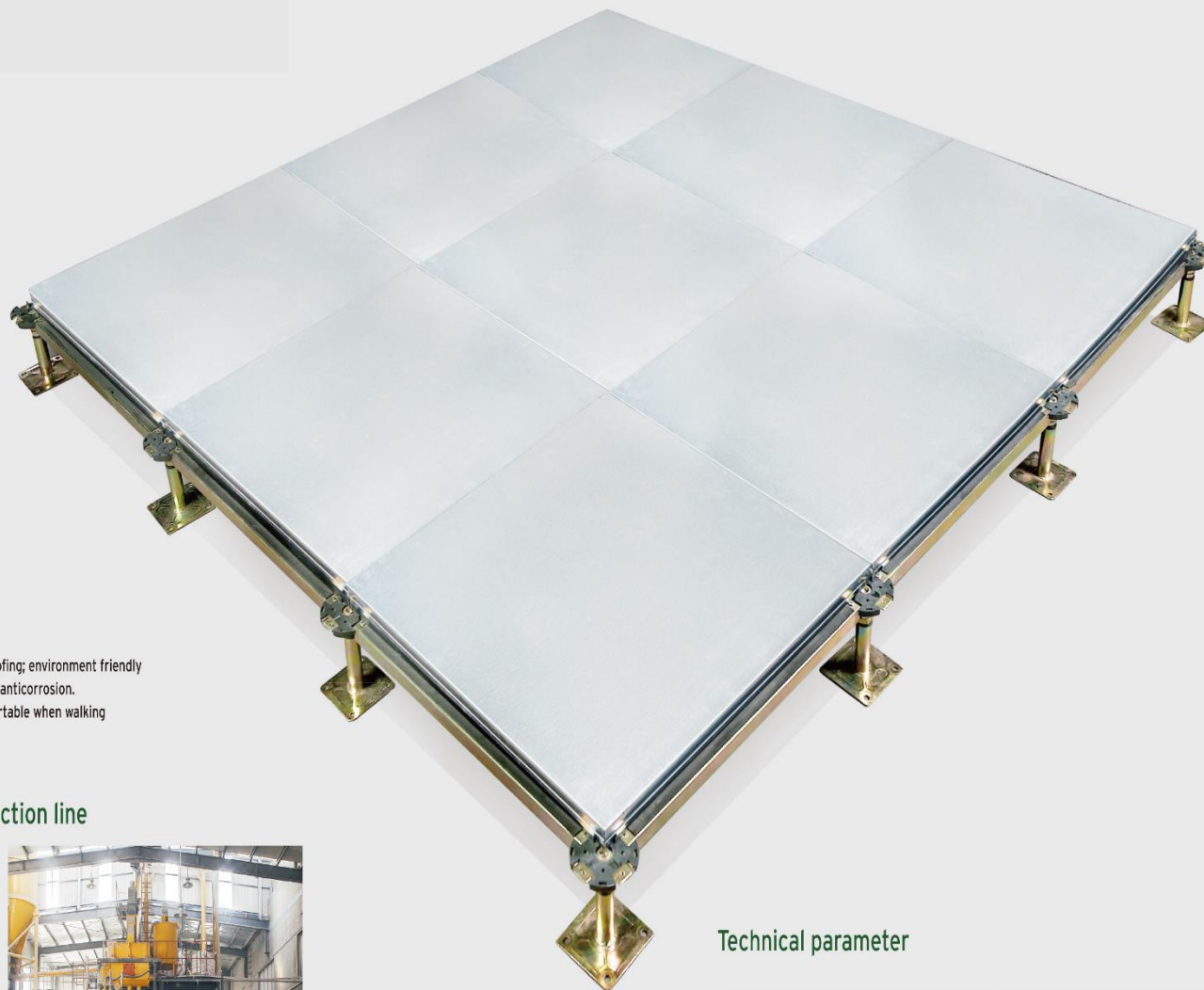
500mm x 500 x 26mm

Structure

Encapsulated Calcium Sulfate Floor employs superior zincing steel plates, hexahedral wrapt structure, and high-density Calcium Sulfate base material.

Feature

- Complete enclosed structure; high sealing capacity
- High bearing capacity; high impact resistance; grade A fireproofing; environment friendly
- Excellent flame retardant, heat insulation, sound proofing and anticorrosion.
- Neat and elegant appearance, high decorativeness, and comfortable when walking
- Usually use in matching with tile carpets.



Its six edges adopt superior zincing steel plates and all-enclosed structure, while the surrounding of the floor are produced by zincing steel plates through pressing and riveting.

Calcium sulfate production line

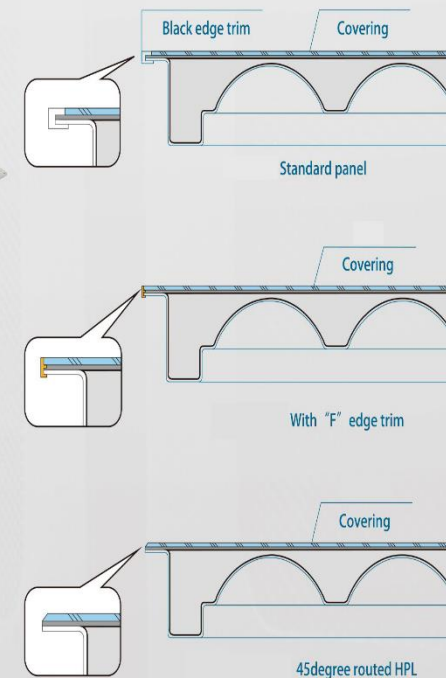
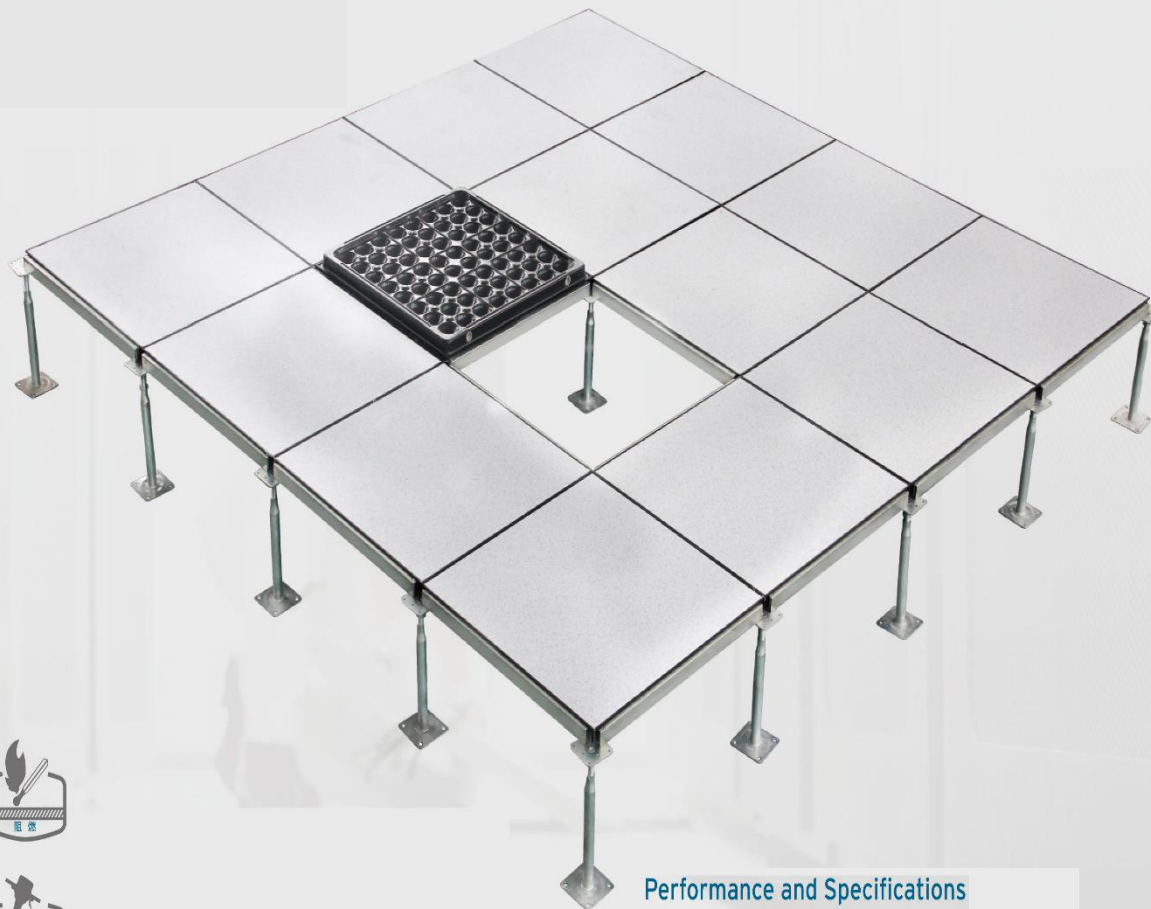


Technical parameter

Type	Size	Concentrated	Impact Load	Ultimate Load	Uniform Load	Rolling Load	
International	mm	N	N	N	N/M ²	10times	10000times
FS800	ECS 600-Q	600×600×25	3000	3000	≥9000	≥12500	2215 1548
FS1000	ECS 600-B	600×600×30	5000	5000	≥15000	≥28598	4121 3210



Steel Anti-static Raised Access Floor



Performance and Specifications

Type	National Standard Type	Size mm	Fire Performance	Concentrated Load	Impact Load	Ultimated Load	Uniform Load	Rolling load	
								10次	10000次
FS668	HY600-CQ	600x600x35	A	≥2990	670	≥8890	≥12500	2215	1548
FS800	HY600-Q	600x600x35	A	≥3596	670	≥10799	≥19796	2959	2215
FS1000	HY600-B	600x600x35	A	≥4498	670	≥13494	≥23294	3596	2959
FS1250	HY600-Z	600x600x35	A	≥5595	670	≥16797	≥33084	4498	3596
FS1500	HY600-CZ	600x600x35	A	≥6693	670	≥20090	≥42581	5595	4498
FS2000	HY600-T	600x600x35	A	≥8898	670	≥26685	≥49784	6693	5595
FS2500	HY600-CT	600x600x35	A	≥11093	670	≥33290	≥58280	8898	6693

Black edge trim

Introduction of Products

Full steel, tile could be HPL or PVC, ceramics. Lower plane is stretched plate, surface plane is hard steel. Foaming cement infilled conductive regula for four sides. Pedestal is pressured forming by steel plate, lead screw can be adjusted at discretion, stringer is made with square tube.



Application

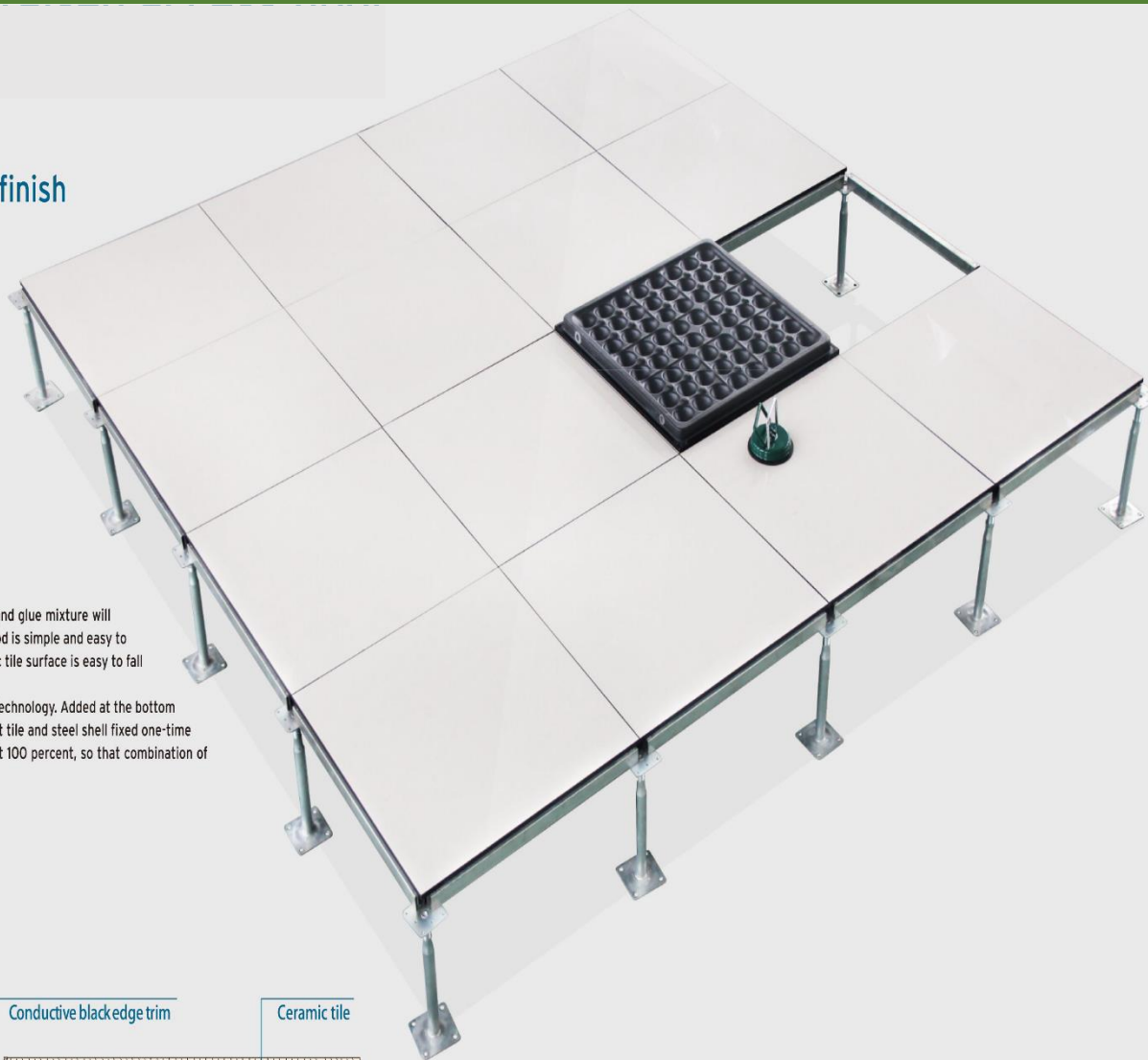
Antistatic access floor is widely used in computer center, communication center, data centers, the power station, microwave communication stations, satellite ground stations, mobile communication center, program- controlled telephone exchange center, radio and television editorial room and other professional editorial command room. And it is installed in production workshop of integrated circuits, computer, telecom- munications, electronics and optical equipment. It can be seen in hospital operation room and electronic imaging examination rooms and other electrostatic sensitive industry like military, petro chemical and other inflammable places.

The panel is made of high quality deep stretch coil steel sheet and SPCC steel sheet, which is punched, spot-welded, coated with epoxy powder after has been phosphorated. The panel is filled with foamed cement inside. After being kept for a period of time, it forms a stable support structure. The top steel sheet is stuck with anti-wear and antistatic HPL. And the panel is installed with stringer and pedestal.



Anti-static Ceramic Raised Access Floor

Raised access floor with ceramic finish



Introduction of Products

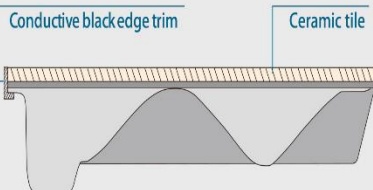
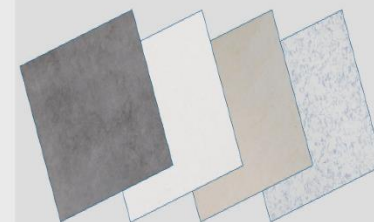
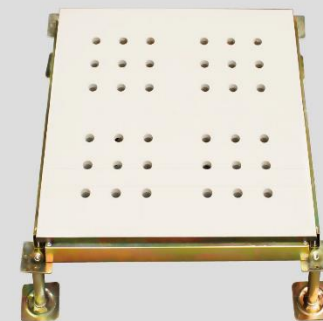
New technology, new product

The traditional ceramic tile surface manufacturing process is the cement and glue mixture will be the ceramic tile and after the grouting steel bonding. Because the method is simple and easy to be used in the process of transportation and use, the surface of the ceramic tile surface is easy to fall off, and the normal use is affected.

On the basis of the traditional process, company improved, the use of new technology. Added at the bottom of the reinforcement design, punching on the surface of steel plate, the first tile and steel shell fixed one-time cement grouting, making the contact area of the cement and tile at almost 100 percent, so that combination of truly effective.

Feature

- High wear resistance and long service time.
- Environmental protected, non-radioactive elements, anti-pollution, easy to clean;
- Class A flame spread and smoke development rating.
- High load, high stability.



Type		Size	Concentrated	Impact Load	Ultimate Load	Uniform Load	Rolling Load	
International		mm	N	N	N	N/M ²	10times	1000times
FS800	HBD600-Q	600×600×40	≥3596	670	≥10799	≥19796	2959	2215
FS1000	HBD600-B	600×600×45	≥4498	670	≥13494	≥23294	3596	2959



Anti-static Calcium Raised Floor

Size

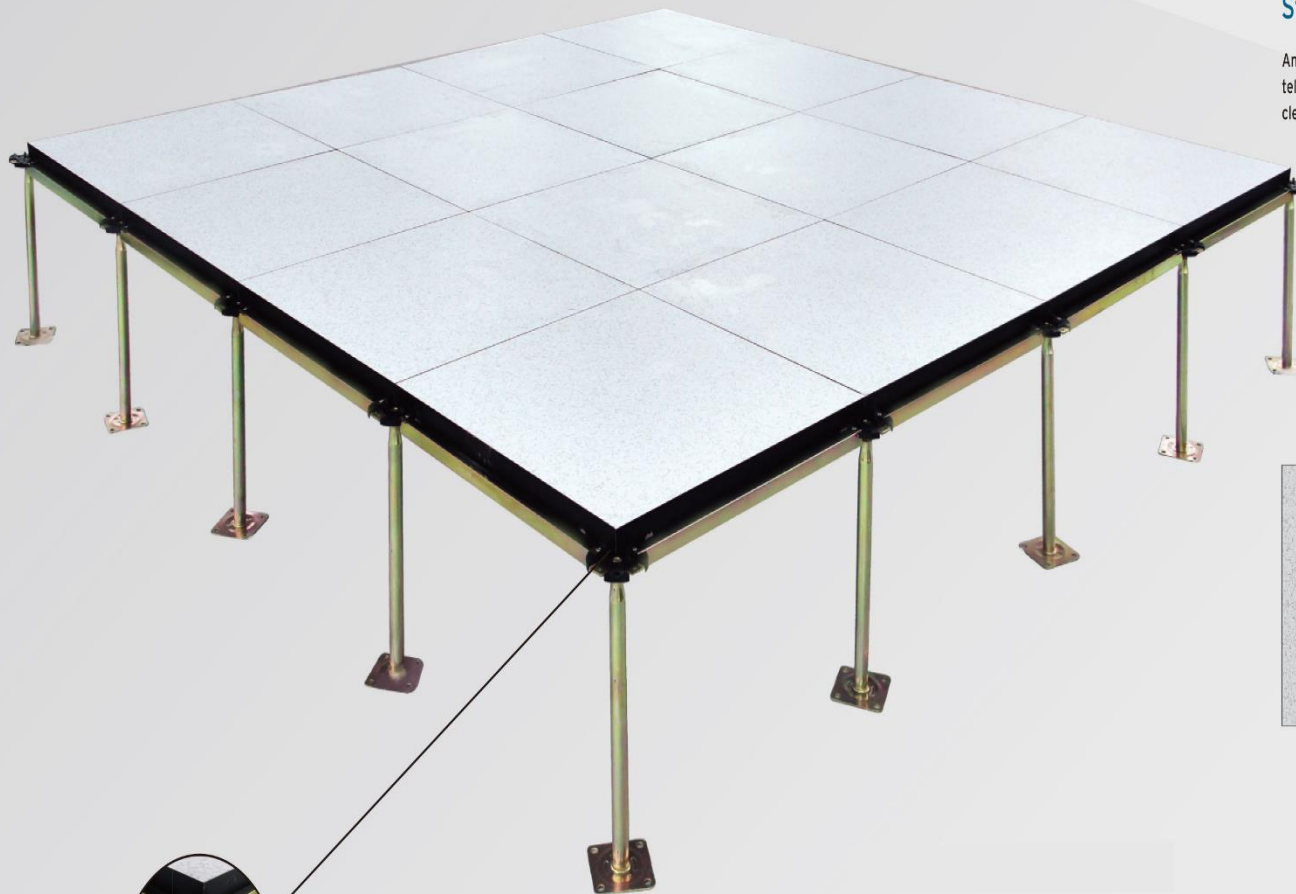
600mm×600×32mm

Feature

- High bearing capacity; high impact resistance; grade a fireproofing; high stability; environment friendly
- High surface evenness and accuracy of dimension; arbitrary inter-convertibility
- Excellent flame retardant, heat insulation, sound proofing and anticorrosion.
- Neat and elegant appearance, high decorativeness, and comfortable when walking

Structure

Anti-static calcium sulphate raised floor is widely used in telecommunication room, power station, computer room, factory clean room and other anti-static requiring places.



Front

Back

结构 Structure

Its base material is Calcium Sulfate; its surface employs HPL or PVC tiles; it's under surface zincing steel plates and its edges bonded with black conductive PVC. Its bottom employs superior zincing steel plates (or iron or aluminum sheets)



Type	Size	Concentrated	Impact Load	Ultimate Load	Uniform Load	Rolling Load	Remarks
International	mm	N	N	N	N/M ²	10times 10000 times	
FS1000	HDG600-B 600×600×32	≥4498	670	≥13494	≥23294	3596 2959	



Wooden Floor Access Floor

Black edge trim

Size
600x600x30mm / 600x600x40mm

产品介绍 Introduction of Products

Static-free Wooden Raised Moveable Floor employs anti-flaming chipboard of high-density (720Kg/m³) as base material. Static-free HPL and conductive PVC are allowed to be attached onto the surface. Its undersurface is sealed with superior zincing plates (or aluminum sheets), and its edges are bonded with conductive rubbers.



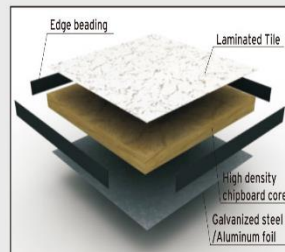
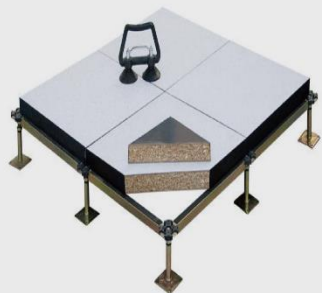
Structure

Woodcore access floor consists of high-density (720Kg/m³) chipboard. Galvanized steel sheet / aluminum foil is bonded to the bottom of the chipboard. HPL or PVC is stuck to the top of the chipboard, four edges are sealed with PVC edging strip.

Application

Light; high bearing capacity;
Grade b1 fireproofing;
High moisture-proof capacity;
Excellent anti-static capacity;

including places requiring antistatic protection, such as data centers, computer houses, communication centers, schools, cloud computer houses, converting stations, control centers.



Performance and Specifications

Type		Size	Concentrated Load	Impact Load	Ultimated Load	Uniform Load	Rolling load	
International		mm	N	N	N	N/M ²	10times	10000times
FSL800	HMD600-Q	600×600×30	≥3596	670	≥10799	≥19796	2959	2215
FST1000	HMD600-B	600×600×40	≥4498	670	≥13494	≥23294	3596	2959

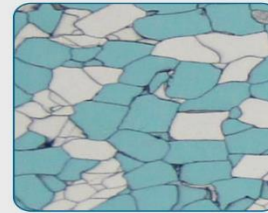


Anti-static PVC

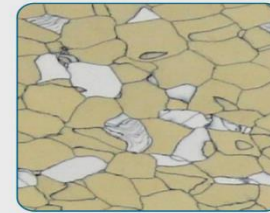
PVC conductive floor

Features

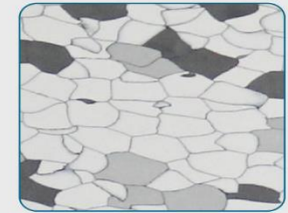
- Green
- Thin and light
- Super wear-resistant
- Flexible and super shock
- Super anti-skid
- The fire retardant
- Water moisture
- Acoustic noise canceling
- Anti-bacterial properties
- Fast installation and construction
- Acid and alkali resistance
- Thermal conductivity
- Easy maintenance



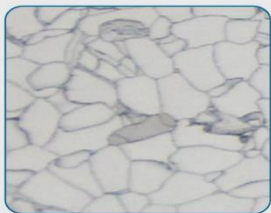
PVC-01



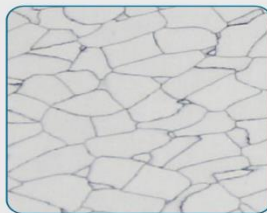
PVC-02



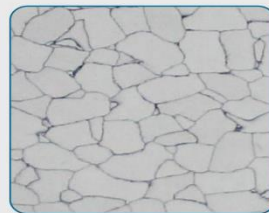
PVC-03



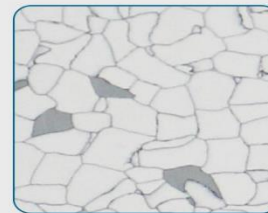
PVC-04



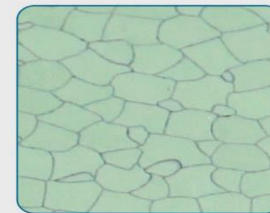
PVC-05



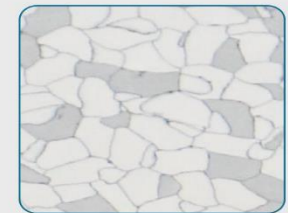
PVC-06



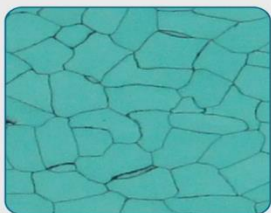
PVC-07



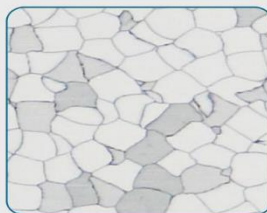
PVC-08



PVC-09



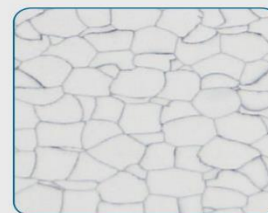
PVC-10



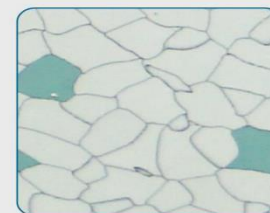
PVC-11



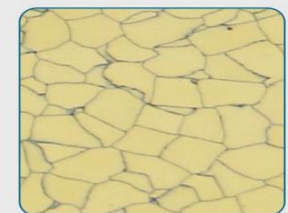
PVC-12



PVC-13



PVC-14



PVC-15



Glass Raised Access Floor



Glass floor

Application

This panel could be installed with any of anti-static calcium sulphate raised floor, high-density woodcore raised floor and aluminum raised floor.

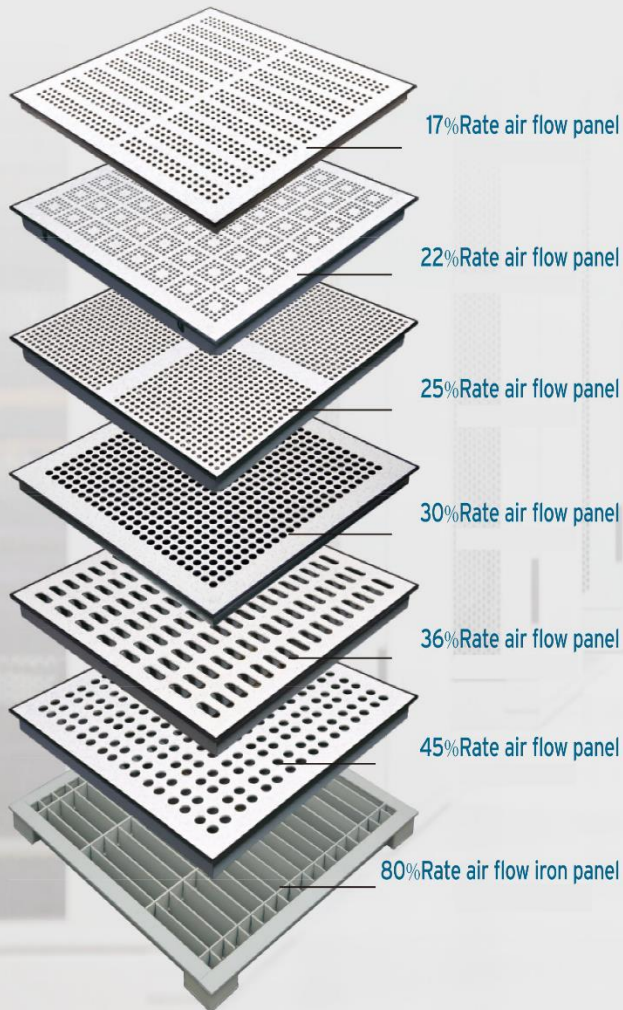
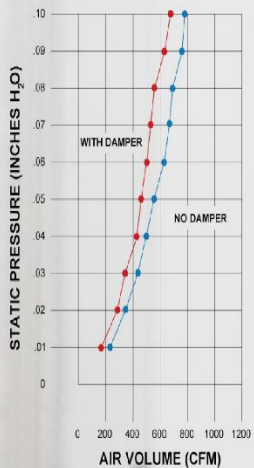




Air-flow system

Introduction of Products

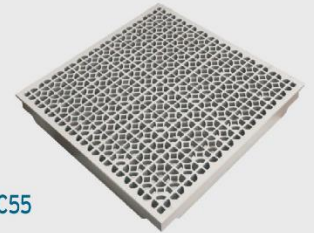
The ventilation plate structure is similar to the anti static all steel access floor, but without foaming filler, the ventilation system is composed of circular ventilation holes. Ventilation floor and all steel floor supporting the use of the floor, for the lower part of the floor of the ventilation requirements of the site, floor ventilation rate of 20%~45%.



56% Opening Rate Die-casting aluminum grate panel (interchangeable with steel panel)



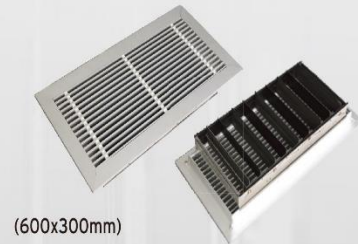
DC55



Aluminum airgrillewithdamper



(600x600mm)



(600x300mm)



DC68



Sliding Damper



Round Damper

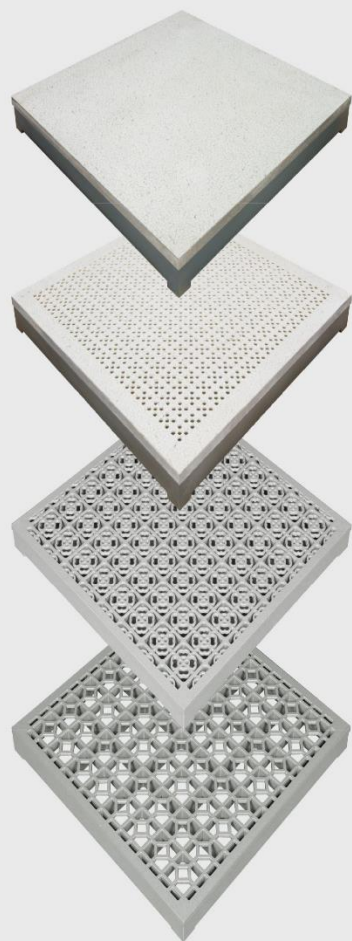


Opposite Open Damper (for aluminum grate panel and air grille)



Aluminum Access Floor

Size
600×600×50mm



• DC22 panel

• DC22

• DC56

• DC58

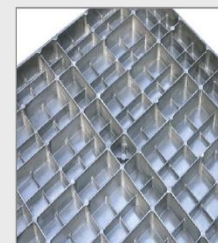
Introduction of Products

Aluminum access floor is die-casting with aluminum ingot which is light and anticorrosion. Aluminum access floor is widely used in the Aerospace Center, Military Command Headquarter, Data Center and Clean Room.

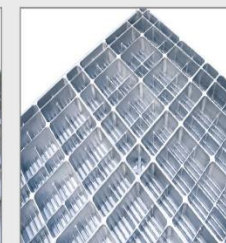


Feature

- New original design with high dimension accuracy.
- Light weight, high density and good loading capacity
- Waterproof, fireproof, anti-corrosion, anti-magnetic, environment friendly and non-radiation.
- Stable structure and never deflects, good conductivity.
- Recycleable and economical



HLS700



HLS1200



Shield panel



Type		Size	Concentrated	Impact Load	Ultimate Load	Uniform Load	Rolling Load		Remarks
International		mm	N	N	N	N/M ²	10times	10000times	
FS1000	A1000-B	600×600×50	>4498	670	>13494	>23294	3596	2959	OA 智能化楼宇架空标准活动地板 (CISCA)
FS1500	A1500-Z	600×600×50	>6693	670	>20090	>42581	5595	4498	



Data Center Product

Temperature Control Fan System

Introduction of Products

Beside Air boosted Power Fan Unit is designed to provide a blast of cooling through an individual directional airflow panel. The temperature controlled fan units are available quad fan models. The fan has multiple control options to automatically turn on when conditions require additional cooling. This powerful solution is ideal for solving the toughest hot spots in a data center.



Fan Unit

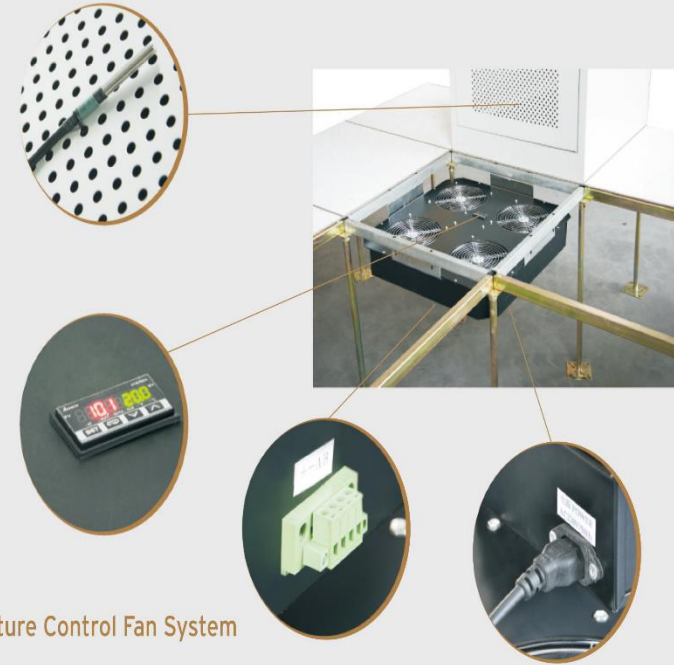


Four-Fan Unit

Performance Characteristics

- A.Zero maintenance
- B.Installation can be carried out by IT staff
- C.Multiple control options for both models available
- D.VN - client sensor network
- E.High Precision, Quick Response Temperature Measurement
- F.User programmable set point
- G.Infinitely variable fan speed from 0-100% for precise airflow control
- H.Viewable Peak Temp for walkthrough check of each rack
- I.Easily installs into either 24" or 60cm raised floor systems

Model Selection



Parameter Table of Temperature Control Fan System

Model	Parameter Name	Power Parameters		Power (W)	Blowing Rate (m ³ /h)	Fan Type	Fan Quantity	Temperature Sensor Quantity	Noise	Communication Interface
		Rated Voltage (V)	Rated Frequency (Hz)							
ABU-1AC350-SN		220	50	140	2670	AC350	1	1	58	RS485
ABU-1AC350-MN		220	50	145	2670	AC350	1	3	58	RS485
ABU-1AC400-SN		220	50	195	3500	AC400	1	1	60	RS485
ABU-1AC400-MN		220	50	200	3500	AC400	1	3	60	RS485
ABU-1AC450-SN		220	50	235	4500	AC450	1	1	62	RS485
ABU-1AC450-MN		220	50	240	4500	AC450	1	3	62	RS485
ABU-1EC350-SN		220	50	175	3600	EC350	1	1	65	RS485
ABU-1EC350-MN		220	50	180	3600	EC350	1	3	65	RS485
ABU-1EC400-SN		220	50	395	4800	EC400	1	1	68	RS485
ABU-1EC400-MN		220	50	400	4800	EC400	1	3	68	RS485
ABU-1EC450-SN		220	50	330	5600	EC450	1	1	69	RS485
ABU-1EC450-MN		220	50	335	5600	EC450	1	3	69	RS485
ABU-4AC200-SN		220	50	280	3100	AC200	4	1	65	RS485
ABU-4AC200-MN		220	50	285	3100	AC200	4	3	65	RS485
ABU-4EC200-SN		220	50	225	3600	EC200	4	1	66	RS485
ABU-4EC200-MN		220	50	230	3600	EC200	4	3	66	RS485



Data Center Product

VAV-GSC Components

Standard configurations for VAV-GSC include housing, air pipes, air valve and air supply grille. For options, we have different dampers and thermostats under pressure controlling model. Without pressure controlling, you can choose DDC controller, thermostat and air volume sensor.

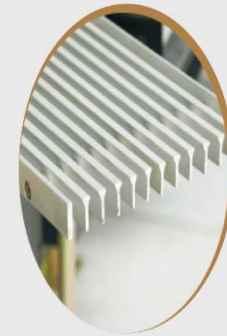
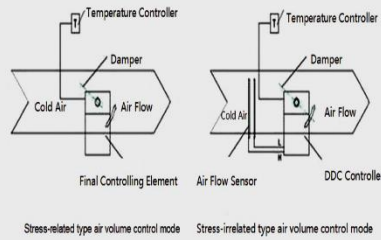


Air supply grille

Electric cabinet

Air valve

Housing



Model	Air Grille Surface Length (mm)	Air Grille Surface Width (mm)	Housing Depth (mm)	Types of the Blast Pipes
GSC-600-126	600	126	280	Cylinder Type
GSC-1200-126	1200	126	280	Square Type

Model	Air Volume m/h	Fan Power W	Power V	Outlet Pressure Pa	Heating Power W	Dimension mm
FH-VAV-GFP-500	500	25	220	5-10	250/500	600x600x250



Accessories

Functions

Beside pedestals are available, with high load strength. Achieve to different flooring finish height.

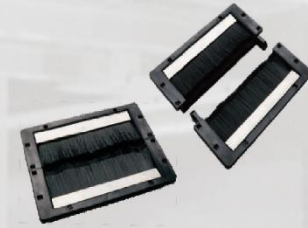


Ø38

Ø32



Round brush grommet



Surface brush grommet



Split integral grommet



C01

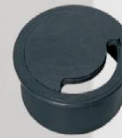
C02

C03

C04



Diameter 15cm



Diameter 19.5cm

Round Grommet



Square Grommet



Integral grommet



F06

F01

F02

F05

W03

W05

W07

W09



Single/Double cup lifter



Outlet box B



Outlet box C



Plastic Pedestals

Wide range of applications

- terraces
- balconies
- pool decks
- water features
- landscape area's
- roofs
- interior flooring
- shop design
- ...

Structure



Head:φ120mm

Screw:φ68mm

Coupler:
Extended height 100-120mm

Lock Ring

Base:φ170mmX60mm

Slope corrector:φ206mm

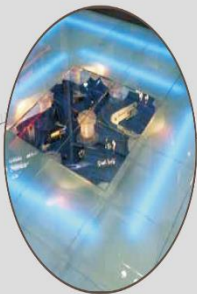
Slope correct range0-5%:

Performance load:1T

Support real figure



Applications





Covering material

High Pressure Laminate(HPL)



HPL-01



HPL-02



HPL-03



HPL-04



HPL-05



HPL-06



HPL-07



HPL-08



HPL-09



HPL-10



HPL-11

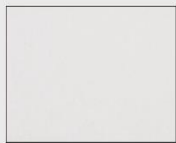


HPL-12

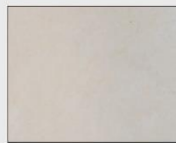
Ceramic tile



CT-01



CT-02

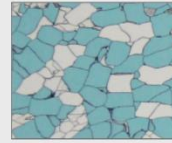


CT-02

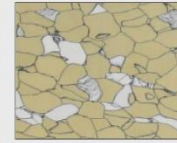


CT-02

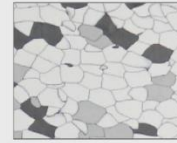
Conductive PVC tile (10^4 - 10^6 ohms)



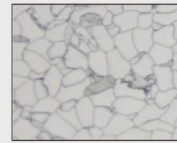
PVC-01



PVC-02



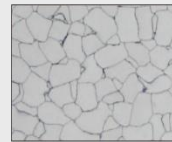
PVC-03



PVC-04



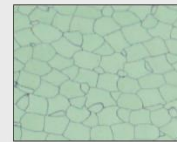
PVC-05



PVC-06



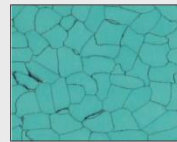
PVC-07



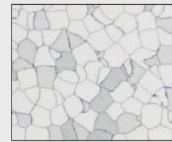
PVC-08



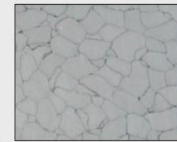
PVC-09



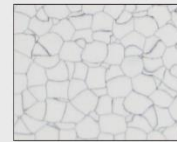
PVC-10



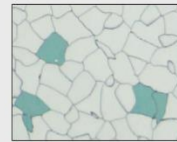
PVC-11



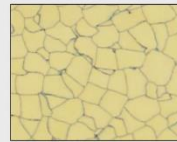
PVC-12



PVC-13



PVC-14



PVC-15

Carpet tile



CT-01



CT-02



CT-03



CT-04

Marble tile



MT-01



MT-02



MT-03



MT-04

Thanks DURFLOOR

Contact:

Phone: +966 556 006 672

Email: info@DURDOOR.COM

Website: www.durdoor.com