





DURTEX
CATALOGUE FOR
SEDUCES CARPET
TILES



COLLAGE ,CONTINUING, LIMITLESS

Style name: COLLAGE

Construction: Tip Shear

Fiber: 100%Universal Nylon 6

Gauge: 1/10

Stitches: 11 per inch

Pile Hight: 5.0-8.0mm(±0.5mm)

Pile Weight: 23oz/yd2

Backing: PVC with fiberglass Tile size:50cm*50cm

Style name: CONTINUING LIMITLE

Construction: Tip Shear

Fiber: 100%Universal Nylon 6

Gauge: 1/10

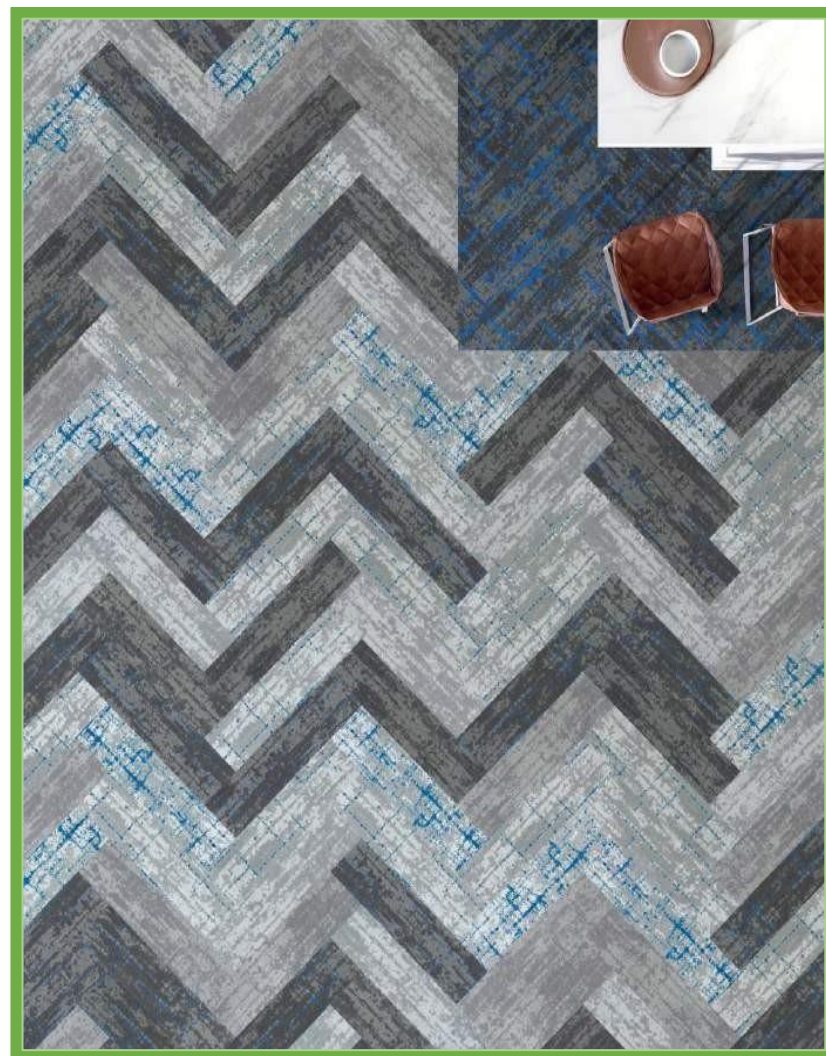
Stitches: 10 per inch

Pile Hight: 5.0-8.0mm(±0.5mm)

Pile Weight: 25oz/yd2

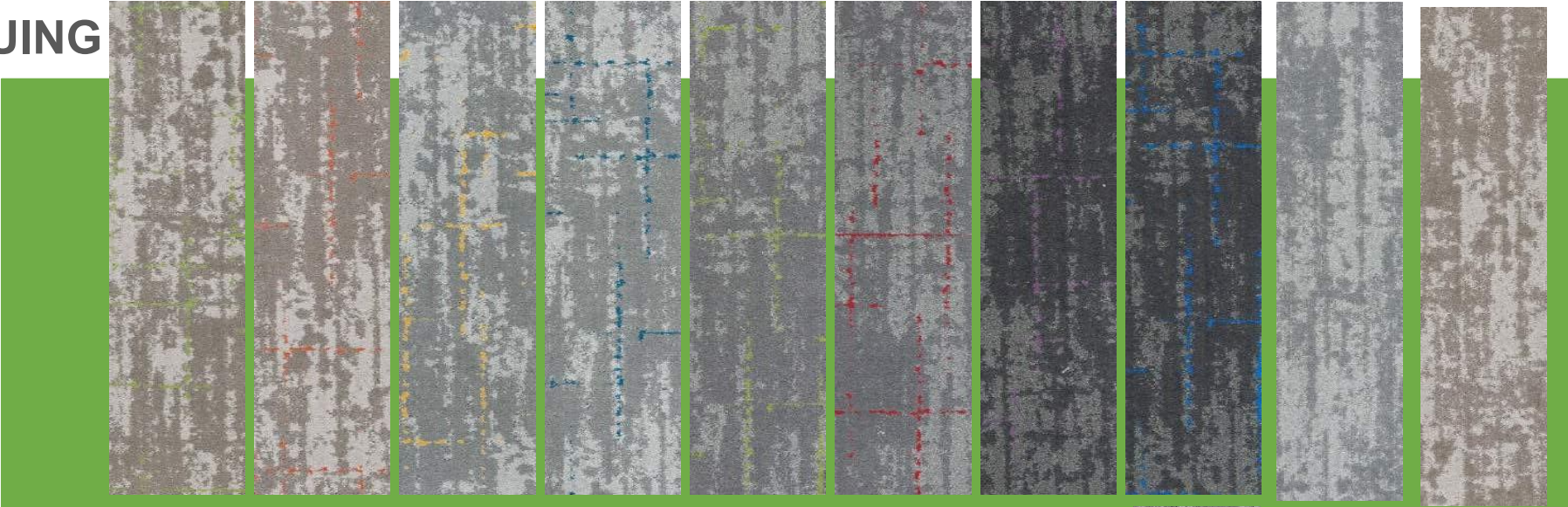
Backing: PVC with fiberglass

Tile size:25cm*100cm

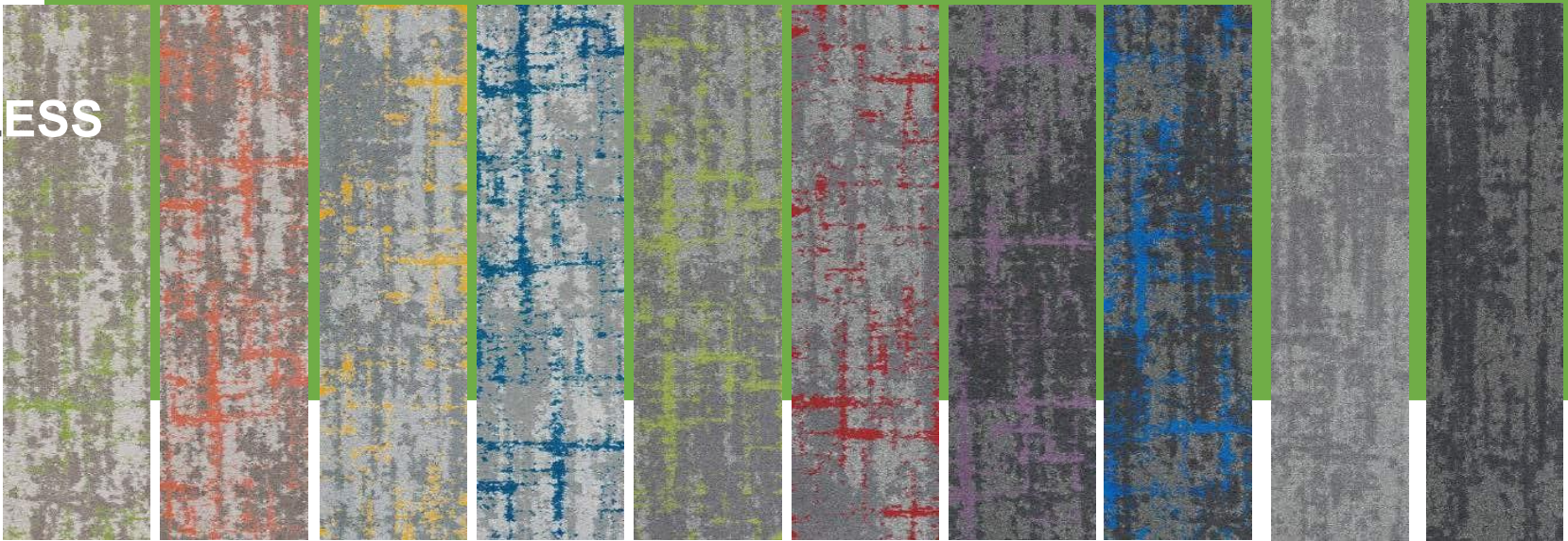




CONTINUING



LIMITLESS





**COLLAGE
CONTINUING**



COLLAGE
CONTINUING
LIMITLESS





LUMINESCENT

Style name: LUMINESCENT

Construction: Tip Shear

Fiber: Universal Nylon 66

Gauge: 1/12

Stitches: 10 per inch

Pile Height: 2.5-6.5mm(±0.5mm)

Pile Weight: 24oz/yd²

Tile size:50cm*50cm





LUMINESCENT - 1 #



LUMINESCENT - 3 #



LUMINESCENT - 4 #



LUMINESCENT - 6 #



LUMINESCENT - 9 #



LUMINESCENT - 11 #



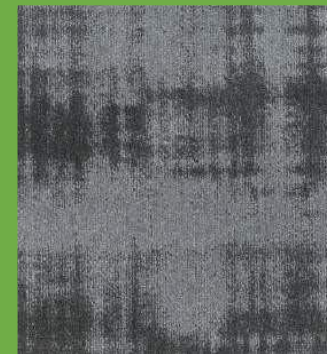
LUMINESCENT - 2 #



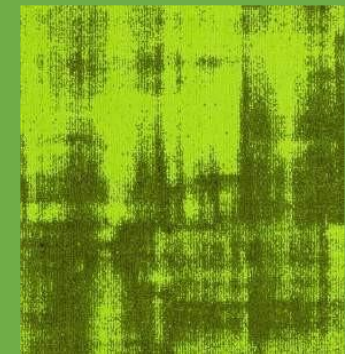
LUMINESCENT - 5 #



LUMINESCENT - 7 #



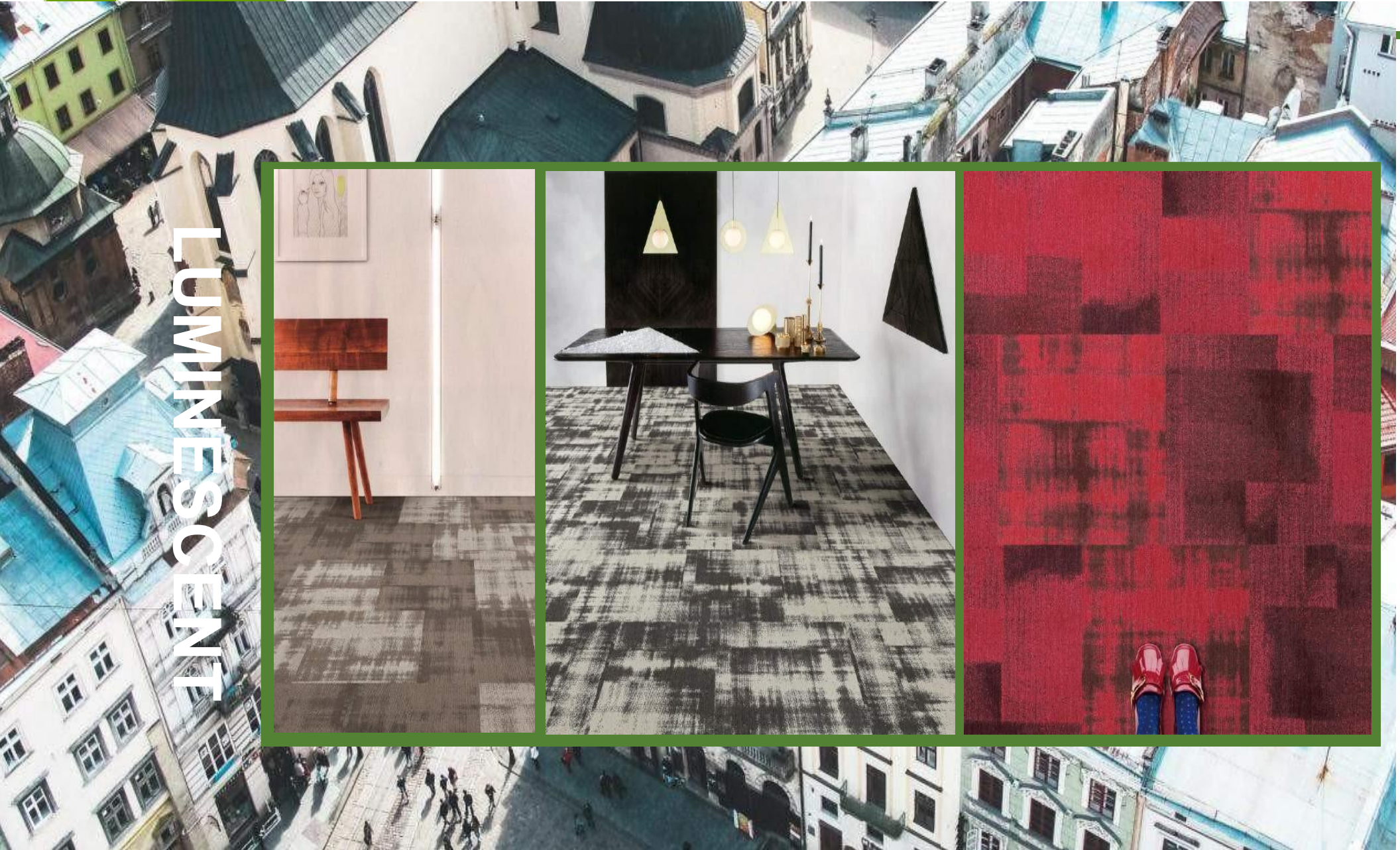
LUMINESCENT - 8 #



LUMINESCENT - 12 #



LUMINESCENT





OVERTURE

Style name: OVERTURE

Construction: Multi-Level Loop

Fiber: DUPONT SORONA FIBER

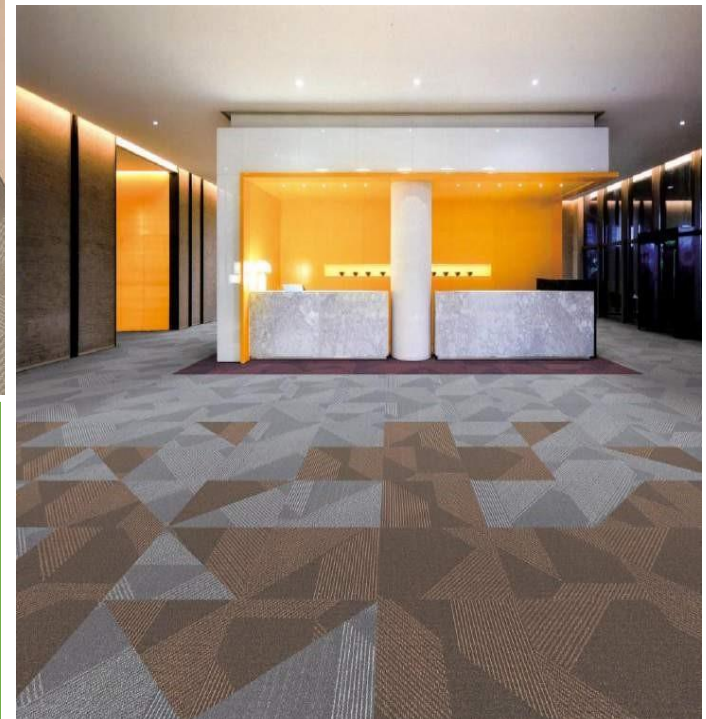
Gauge: 1/12

Stitches: 10 per inch

Pile Height: 2.5-5.0mm(±0.5mm)

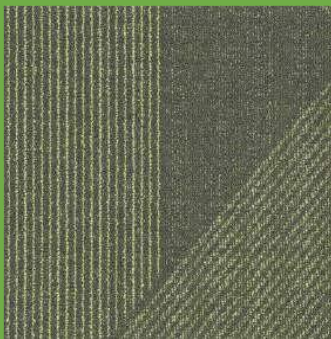
Pile Weight: 21oz/yd²

Tile size:50cm*50cm





OVERTURE - 1#



OVERTURE - 2#



OVERTURE - 3#



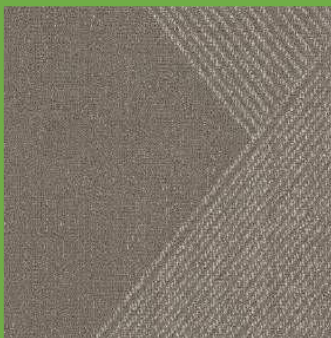
OVERTURE - 4#



OVERTURE - 5#



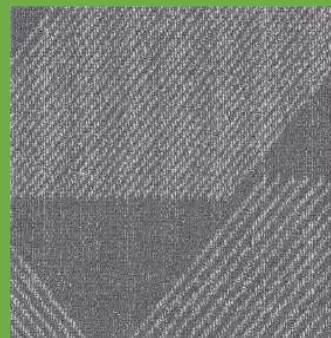
OVERTURE - 6#



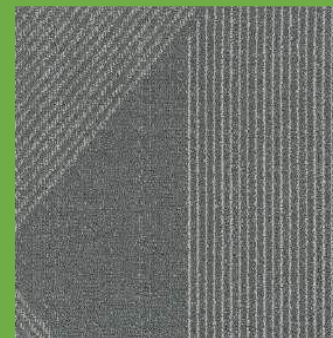
OVERTURE - 7#



OVERTURE - 8#



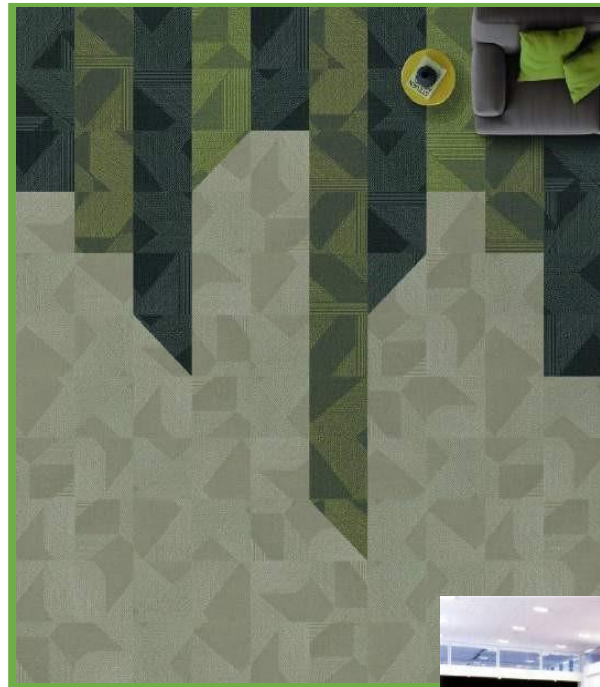
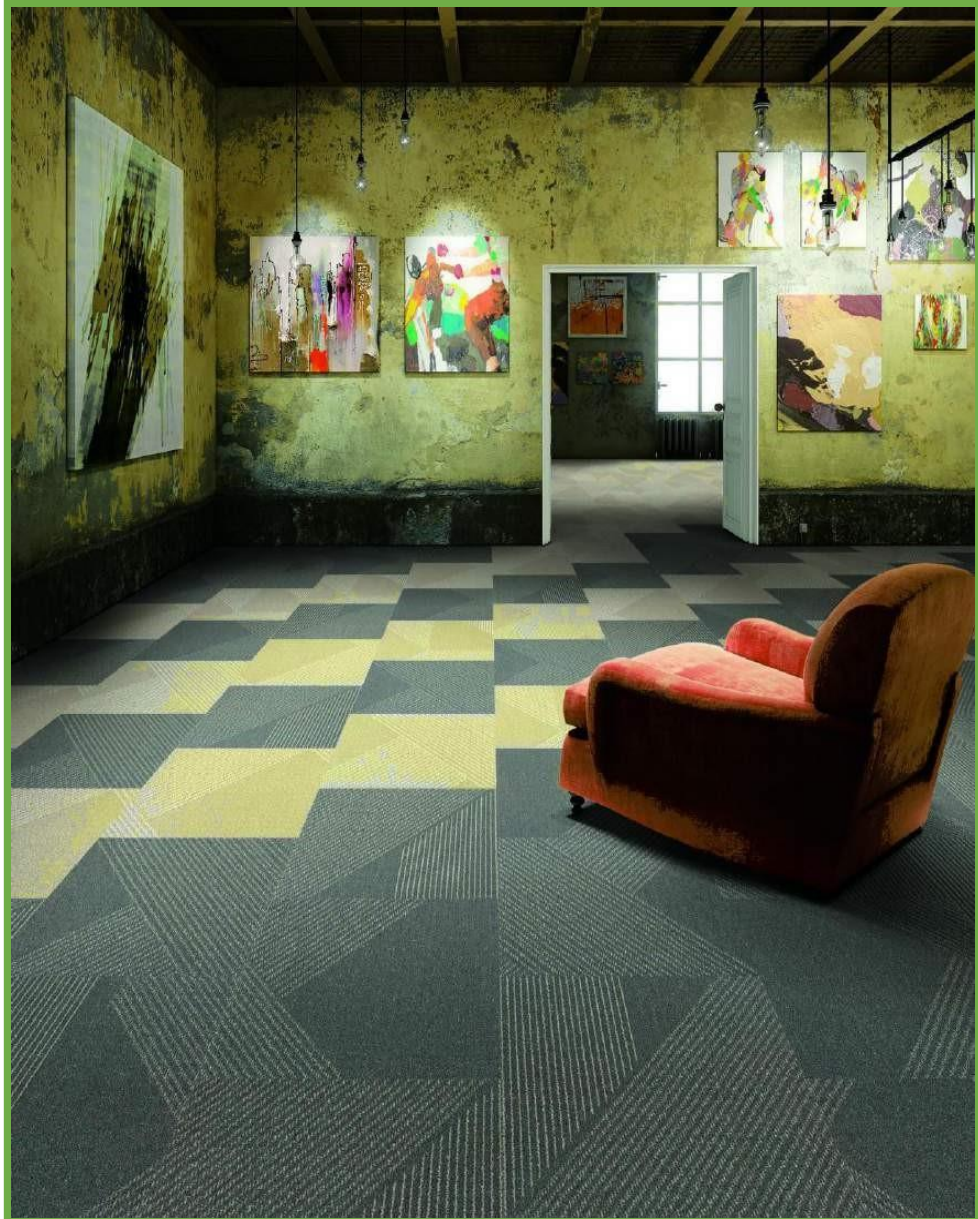
OVERTURE - 9#



OVERTURE - 10#



OVERTURE - 11#



OVERTURE



CONCERTO

Style name: CONCERTO

Construction: Multi-Level Loop

Fiber: DUPONT SORONA FIBER

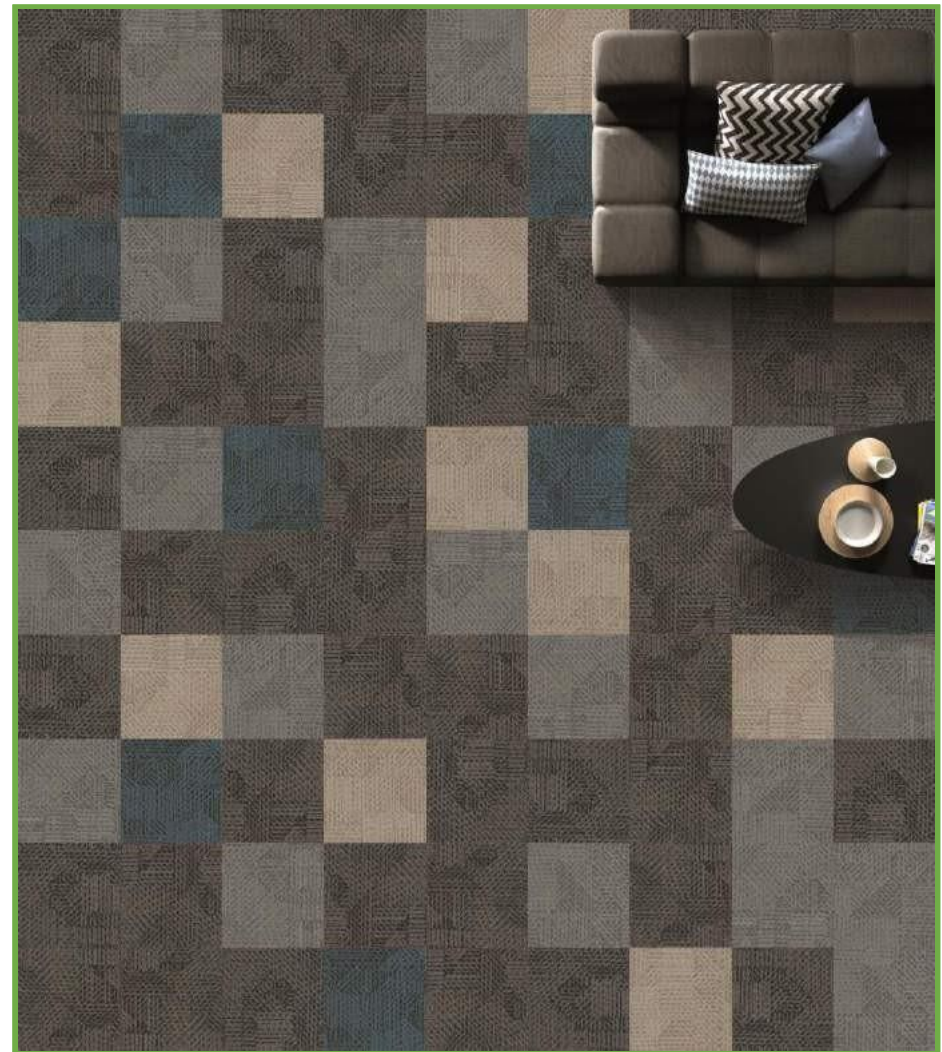
Gauge: 1/12

Stitches: 10 per inch

Pile Height: 2.5-5.0mm(±0.5mm)

Pile Weight: 21oz/yd²

Tile size:50cm*50cm





CONCERTO



CONCERTO -1#



CONCERTO -2#



CONCERTO -3#



CONCERTO -4#



CONCERTO -5#



CONCERTO -6#



CONCERTO -7#



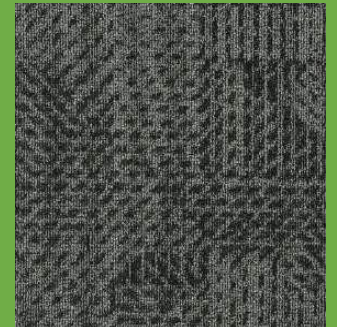
CONCERTO -8#



CONCERTO -9#



CONCERTO -10#



CONCERTO -11#



CONCERTO



COLD STREAM

Style name: COLDSTREAM

Construction: Multi-Level Loop

Fiber: Plencolor Nylon 6

Gauge: 1/10

Stitches: 11 per inch

Pile Height: 2.5-6.0mm(±0.5mm)

Pile Weight: 21oz/yd²

Tile size:50cm*50cm





COLDSTREAM



COLDSTREAM 1 #



COLDSTREAM 2#



COLDSTREAM 3 #



COLDSTREAM 4#



COLDSTREAM -5#



COLDSTREAM -6#



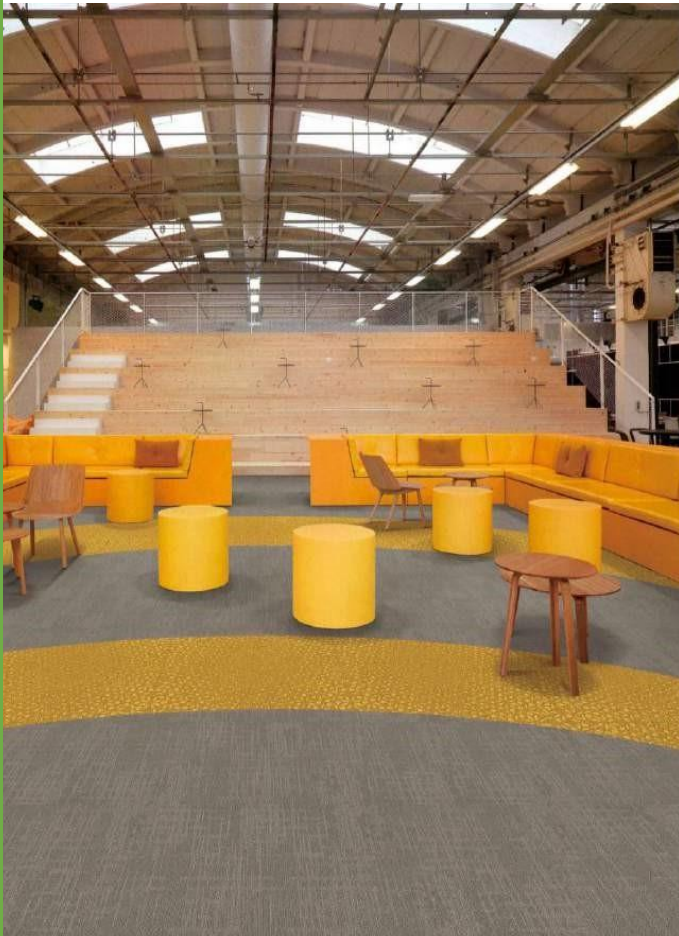
COLDSTREAM -7#



COLDSTREAM -8#



GAL6507



Style name: GAL6507

Construction: Multi-Level Loop

Fiber: 100% Invista Nylon6

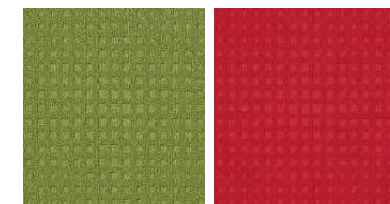
Gauge: 5/64

Stitches: 10 per inch

Pile Height: 2.5-5.0mm(±0.5mm)

Pile Weight: 21oz/yd²

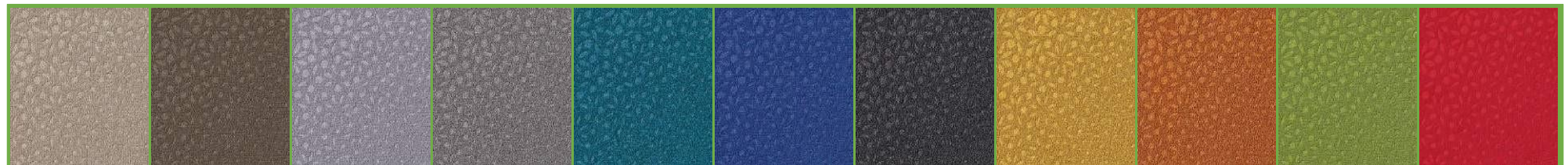
Tile size:50cm*50cm



YM01



GAL6507 YM02



GAL6507 YM03





RFN-08

Style name: RFN 08

Construction: Tip Shear

Fiber: Universal Nylon 6

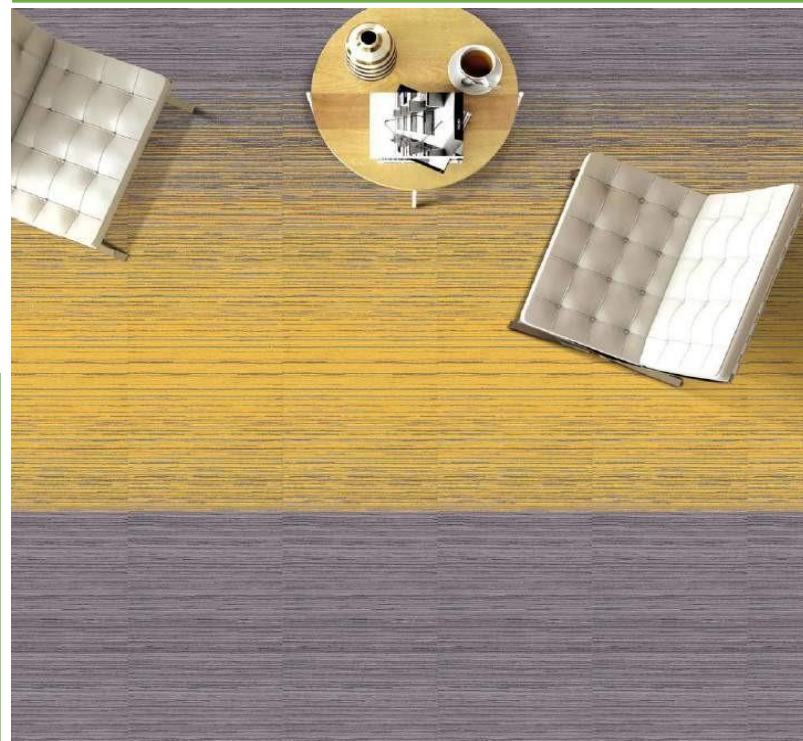
Gauge: 1/12

Stitches: 10 per inch

Pile Hight: 2.5-6.2mm(±0.5mm) Pile

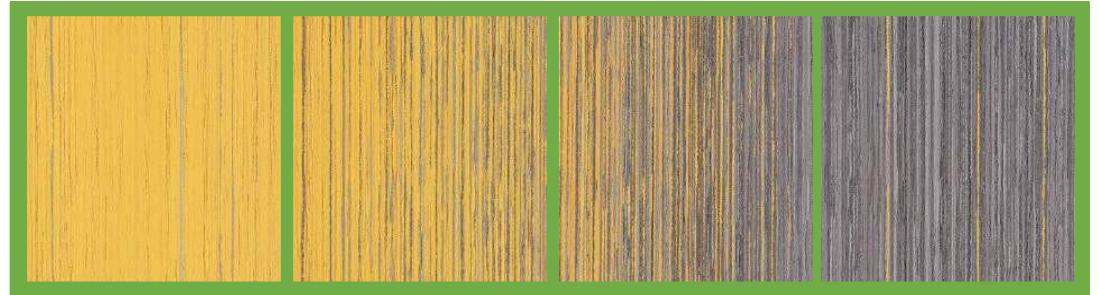
Weight: 25oz/yd²

Tile size:50cm*50cm

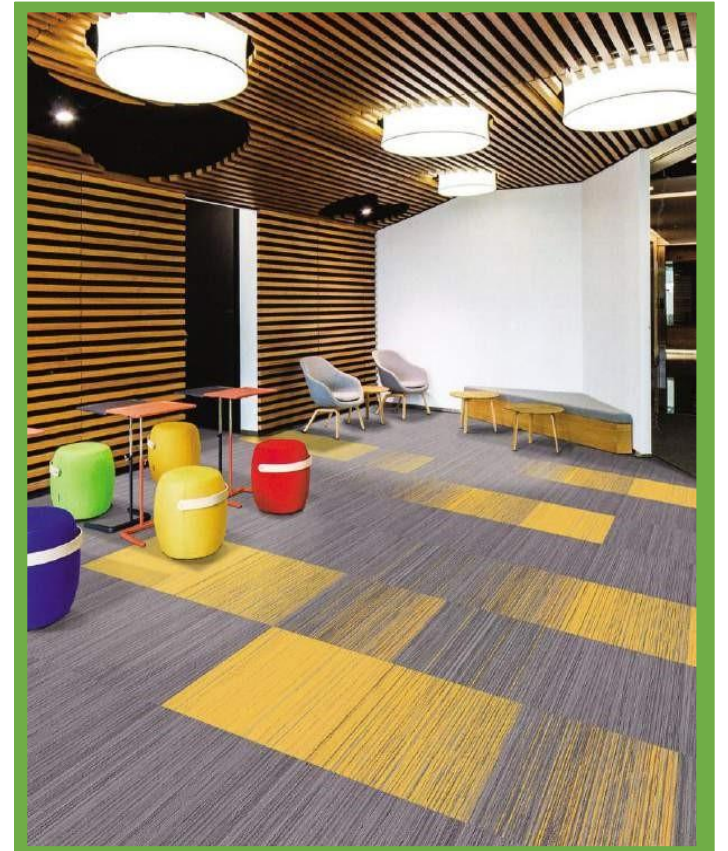


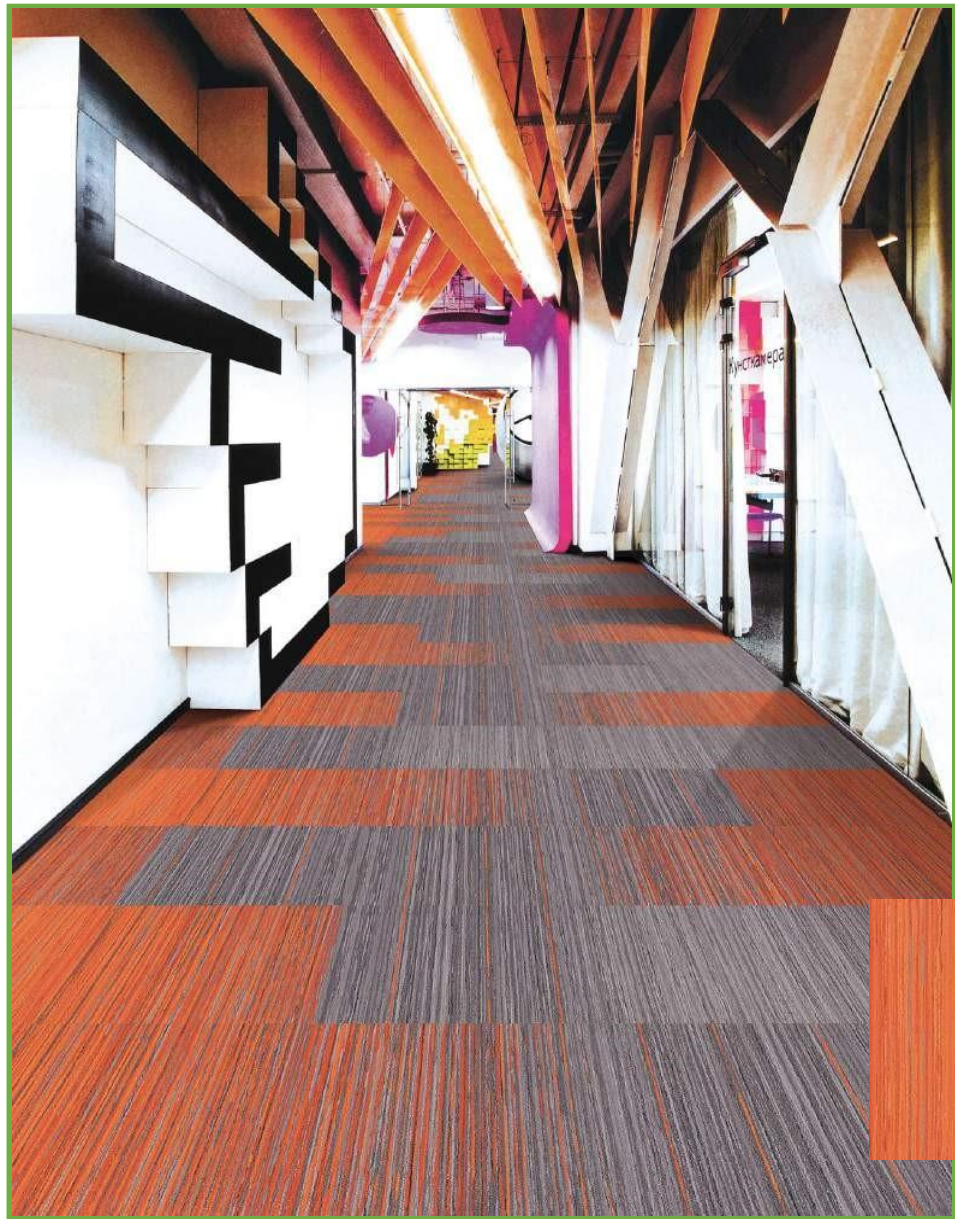


RFN-08



RFN-08-1#





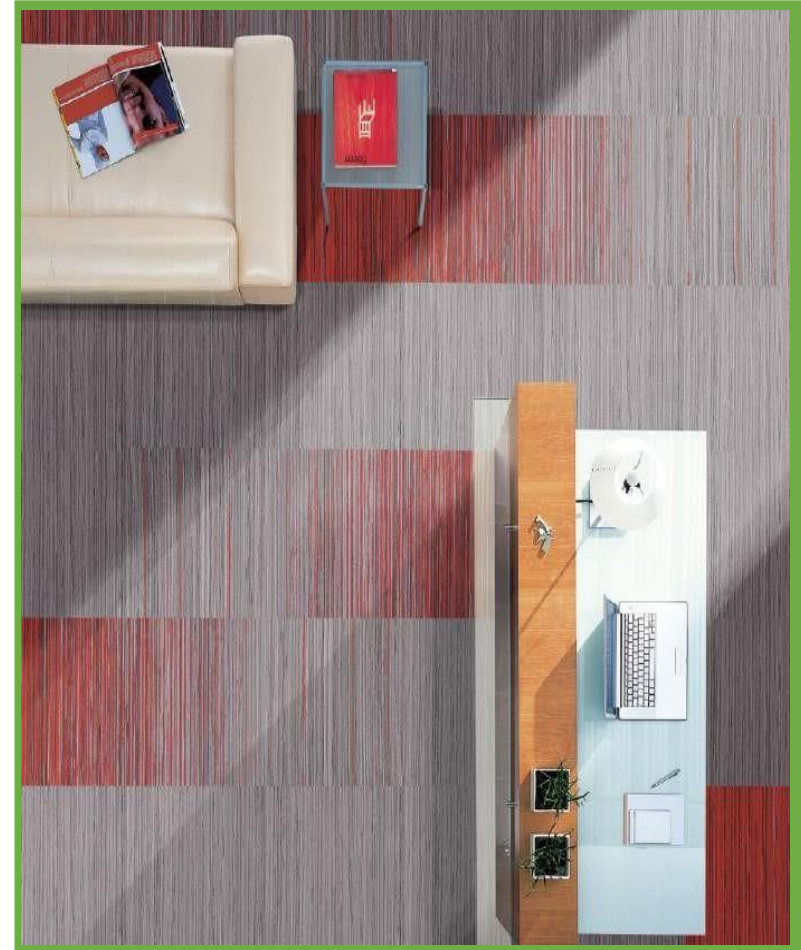
RFN-08-2#





RFN-08-3#







Thanks

DURFLOOR

Contact:

Phone: +966 556 006 672

Email: info@DURDOOR.COM

Website: www.durdoor.com